



The deployment length of solar radiation modification: an interplay of mitigation, net-negative emissions and climate uncertainty

Susanne Baur, Alexander Nauels, Zebedee Nicholls, Benjamin M Sanderson,
Carl-Friedrich Schleussner

► To cite this version:

Susanne Baur, Alexander Nauels, Zebedee Nicholls, Benjamin M Sanderson, Carl-Friedrich Schleussner. The deployment length of solar radiation modification: an interplay of mitigation, net-negative emissions and climate uncertainty. Earth System Dynamics, 2023, 14 (2), pp.367-381. 10.5194/esd-14-367-2023 . insu-04092007

HAL Id: insu-04092007

<https://insu.hal.science/insu-04092007>

Submitted on 9 May 2023

HAL is a multi-disciplinary open access archive for the deposit and dissemination of scientific research documents, whether they are published or not. The documents may come from teaching and research institutions in France or abroad, or from public or private research centers.

L'archive ouverte pluridisciplinaire **HAL**, est destinée au dépôt et à la diffusion de documents scientifiques de niveau recherche, publiés ou non, émanant des établissements d'enseignement et de recherche français ou étrangers, des laboratoires publics ou privés.



Distributed under a Creative Commons Attribution 4.0 International License



The deployment length of solar radiation modification: an interplay of mitigation, net-negative emissions and climate uncertainty

Susanne Baur^{1,2}, Alexander Nauels^{2,3}, Zebedee Nicholls³, Benjamin M. Sanderson⁵, and Carl-Friedrich Schleussner^{2,4}

¹CECI, Université de Toulouse, CERFACS, CNRS, Toulouse, 31100, France

²Climate Analytics, 10969 Berlin, Germany

³Australian-German Climate and Energy College, The University of Melbourne, Parkville, VIC 3010, Australia

⁴Geography Department and IRI THESys, Humboldt-Universität zu Berlin, Berlin, Germany

⁵Centre for International Climate and Environmental Research (CICERO), Oslo, Norway

Correspondence: Susanne Baur (susanne.baur@cerfacs.fr)

Received: 26 April 2022 – Discussion started: 29 April 2022

Revised: 8 March 2023 – Accepted: 8 March 2023 – Published: 28 March 2023

Abstract. A growing body of literature investigates the effects of solar radiation modification (SRM) on global and regional climates. Previous studies have focused on the potentials and the side effects of SRM, with little attention being given to possible deployment timescales and the levels of carbon dioxide removal required for a phase out. Here, we investigate the deployment timescales of SRM and how they are affected by different levels of mitigation, net-negative emissions (NNEs) and climate uncertainty. We generate a large dataset of 355 emission scenarios in which SRM is deployed to keep warming levels at 1.5 °C global mean temperature. Probabilistic climate projections from this ensemble result in a large range of plausible future warming and cooling rates that lead to various SRM deployment timescales. In all pathways consistent with extrapolated current ambition, SRM deployment would exceed 100 years even under the most optimistic assumptions regarding climate response. As soon as the temperature threshold is exceeded, neither mitigation nor NNEs or climate sensitivity alone can guarantee short deployment timescales. Since the evolution of mitigation under SRM, the availability of carbon removal technologies and the effects of climate reversibility will be mostly unknown at its initialisation time, it is impossible to predict how temporary SRM deployment would be. Any deployment of SRM therefore comes with the risk of multi-century legacies of deployment, implying multi-generational commitments of costs, risks and negative side effects of SRM and NNEs combined.

1 Introduction

Emission pathways that reflect the level of climate ambition of current nationally determined contributions (NDCs) until the end of the century are estimated to lead to an average global warming of around 2.4 °C (CAT, 2022). This is still a lot higher than the warming limit agreed upon in the Paris Agreement of 2015 that entails holding warming to well below 2 °C and pursuing efforts of limiting warming to 1.5 °C (UNFCCC, 2015). The growing concern around overshoot-

ing the Paris Agreement's long-term temperature target has led to a discussion of solar radiation modification (SRM), which could in theory halt global temperature increase very rapidly but only as long as it is actively supported (Irvine et al., 2016; Keith, 2000). SRM techniques intend to artificially lower global mean surface air temperature (GSAT) by modifying the radiative energy budget of the Earth system. Proposed methods include stratospheric aerosol injection (SAI), cirrus cloud thinning (CCT) and marine cloud brightening (MCB; Lawrence et al., 2018). SRM methods generally op-

erate on one of the key impacts of climate change, temperature increase, without addressing its cause, anthropogenic greenhouse gas (GHG) emissions, or its other impacts, e.g. ocean acidification. Without explicit emission reductions, as well as the removal of some of these climate forcings from the atmosphere in the long term, i.e. through carbon dioxide removal (CDR; Fuss et al., 2018), GHG emissions commit us to millennia of elevated temperature levels. Therefore, SRM deployment would only be temporary if combined with emission reductions and CDR.

Achieving the Paris Agreement's target of 1.5 °C relies on stringent mitigation with large near-term emission reductions, as shown in the 1.5 °C compatible pathways assessed by the Intergovernmental Panel on Climate Change (IPCC; Rogelj et al., 2018; IPCC, 2021, 2022). It has been discussed that, in the absence of this strong near-term mitigation, SRM could be a tool to avoid the impacts associated with overshooting 1.5 °C until emission reductions and CDR are sufficiently scaled up such that SRM is no longer needed to artificially lower GSAT (Belaia et al., 2021; Buck et al., 2020; MacMartin et al., 2018; Neuber and Ott, 2020; Allen et al., 2018). This “buying-time” approach, although criticised for relying on uncertain promises of SRM and CDR and increasing the risk of “climate debt” (Asayama and Hulme, 2019), currently remains the dominant framework for any SRM deployment (Neuber and Ott, 2020). Surprisingly little analysis, however, has been done on the timescales this type of SRM deployment could entail. Tilmes et al. (2016) analysed the climate impacts of pathways whose temperatures would peak at 3 °C by the end of the 21st century and used CDR and SRM to limit temperature increases to 2.5 and 2 °C. Similarly, MacMartin et al. (2018) chose an experimental setup where mitigation, CDR and SRM are used to meet the 1.5 °C goal from a “business-as-usual” starting point. Both Tilmes et al. (2016) and MacMartin et al. (2018) did not discuss the length of SRM deployment and looked at selected illustrative pathways that cannot capture the many possible futures where a buying-time approach to SRM could be embedded.

In this study, we generate a large dataset of scenarios that use SRM to avoid overshooting the 1.5 °C warming target. The underlying emission scenarios reflect current NDCs until 2030 and subsequently diverge to spread a wide range of conditions by the end of the century. We employ this large scenario set to explore a large variety of futures of SRM interlinkages with mitigation ambition and different magnitudes to which CDR could be scaled up. There is large uncertainty regarding the evolution of emissions under SRM, with some studies arguing that SRM could be deployed for “peak shaving” under already ambitious mitigation scenarios (Coninck et al., 2018) or that it does not negatively affect the public's willingness to engage in mitigation behaviours (Andrews et al., 2022; Austin and Converse, 2021; Fairbrother, 2016; Kahan et al., 2015; Merk et al., 2016), while others fear that it could undermine mitigation ambition even further (Baatz, 2016; Corner and Pidgeon, 2014; Pierrehumbert,

2019; Raimi et al., 2019) and present a “moral hazard” risk (Belaia et al., 2021; Bellamy et al., 2016; Burns et al., 2016; Keith, 2000; McLaren, 2016; Merk et al., 2016; Moreno-Cruz, 2015; Wibeck et al., 2015). Here, we do not investigate to what extent SRM will or will not change mitigation ambition and instead highlight what various emission reduction assumptions could mean in terms of SRM deployment length. Thanks to the large dataset underlying this study, we can analyse several other factors that influence the length of SRM deployment, such as the amount of annual net-negative emissions (NNEs) realised through large-scale CDR and climate system uncertainty.

There is a large body of literature dedicated to CDR and its application in mitigation pathways (Fuss et al., 2014, 2018; Johansson et al., 2020; Rogelj et al., 2019; Schleussner et al., 2016). Large uncertainties regarding overshoot pathways and CDR remain, especially since the technology and the resulting temperature declines are unproven at scale (Pathak et al., 2022). Uncertainties are related to the response of the climate system to negative emissions, the state of the climate system post overshoot in general, the environmental and economic side effects of large-scale deployment, and the level to which CDR can be scaled up (Fuss et al., 2018; Matthews et al., 2020; Rogelj et al., 2019; Schleussner et al., 2016; Zickfeld et al., 2016). In this study, we do not account for feasibility constraints or the potential side effects of CDR deployment; rather, we explicitly assess the sensitivity of our results to any such constraints being in place. As part of our sensitivity assessment, we consider a wide range for maximum annual NNEs reaching up to 40 Gt CO₂ yr⁻¹ (the highest potential the IPCC 6th Assessment Report (AR6) assigns to any carbon removal technology that does not interfere with ocean chemistry (IPCC, 2022)), as well as the uncertainty surrounding the temperature decline in response to net-negative emissions.

It is important to examine SRM deployment length in the context of climate uncertainty. In contrast to mitigation and CDR, climate uncertainty is beyond human control and, as this study demonstrates, would result in greatly differing SRM deployment outcomes for the same levels of emissions. We address climate uncertainty in two ways: firstly, by considering a large range of plausible climate simulators, and secondly, by calculating two climate metrics that relate emissions to temperature change and affect the duration of the overshoot and therefore SRM deployment length.

While many different methods for CDR (Fuss et al., 2018) and SRM (Boucher et al., 2013; Lawrence et al., 2018) that come with different specificities exist, this study does not differentiate between these specific technological approaches, as our results are independent of the boundary conditions for individual SRM and CDR techniques. We acknowledge that forecasting technology this far into the future is highly speculative, and this analysis is by no means intended to be a realistic representation of SRM and CDR pathways. Therefore, this paper does not address issues of feasibility or the envi-

ronmental side effects of SRM or CDR, of which there are many (Lee et al., 2021; Canadell et al., 2021; Douville et al., 2021), nor does it propose potential implementation strategies and designs or pose questions relating to economic, political or ethical concerns. With this contribution, we aim to provide a conceptual framework for exploring SRM deployment length in the context of scenarios that use the technology as a temporary (albeit potentially multi-century) measure.

2 Methods

2.1 Emissions data and pathway extension

As underlying data, we use all scenarios from the IPCC's 6th Assessment Report's database that are in line with the 2030 NDCs (Riahi et al., 2022; Byers et al., 2022) and have decreasing or stagnating emissions in the last 5 years of the 21st century. The policy categories we consider when identifying the scenarios that pass through NDC emissions are P3b, P1c and P0_3b (Riahi et al., 2022). This amounts to a total of 355 scenarios that cover the years 2015 to 2100 and that originate in a similar climatic state in 2030 but diverge afterwards to cover a large variety of emission levels in 2100. We employ this broad range of pathways to analyse SRM under many different developments of mitigation ambition in relation to SRM, such as large increases and decreases, as well as under the scrutiny of climate change uncertainty, by running a probabilistic ensemble of 600 members (see Sect. 2.2).

To be able to estimate potential SRM timescales, we extend all pathways until 2500. In order to explore a wide range of possible future developments, we randomly sample three parameters for the extension of each scenario: the change in rate of decarbonisation after 2100 (0 %–3 % increase), the maximum net-negative fossil CO₂ emissions (log-normal distribution from 0–40 Gt CO₂ yr^{−1}) realised through large-scale CDR (Fig. 1c) and the floor for CO₂ emissions from agriculture, forestry and other land use (AFOLU CO₂; normal distribution −1 to +1 Gt CO₂ yr^{−1}; Fig. 1f). For net fossil CO₂ we choose a positively skewed log-normal distribution of 0 to 40 Gt CO₂ yr^{−1}. The range depicts the maximum mitigation potential that the IPCC AR6 assigns to industrial carbon removal technologies (direct air carbon capture and storage – DACCS), while the distribution that is positively skewed represents the tendency of limits to be at the lower rather than the higher end of the chosen spectrum. The mean of the distribution is set to be 15 Gt CO₂ yr^{−1}, representing the rounded-up median potential experts assign to DACCS in 2100 (Grant et al., 2021). The storage capacity of technologically captured CO₂ is uncertain but is likely in the range of 8000 to 55 000 Gt CO₂ (Dooley, 2013; Kearns et al., 2017). This capacity potential does not impact our results because even the lower end is sufficient for the majority of our pathways (Fig. 4b). We therefore choose no constraint on maximum negative cumulative fossil CO₂ emissions. In contrast,

nature-based CDR solutions represented by AFOLU negative emissions are seriously limited in the total amount they can remove. Current literature suggests that AFOLU-CDR is a solution for the 21st century and that saturation could be hit soon after (Fuss et al., 2018). Therefore, we remove the need to make decisions about the role of AFOLU-CDR (which would be a relatively small part of the picture over the timescales we are considering) by setting the AFOLU long-term emissions level to be close to but not exactly equal to 0 (−1 to 1 Gt CO₂ yr^{−1} in line with the Global Carbon Budget 2022; Friedlingstein et al., 2022). In the analysis of our results, we sum AFOLU and fossil net-negative emissions into one variable which we call net-negative emissions (NNEs).

The modified decarbonisation rate of the last 10 years of the 21st century is linearly extrapolated until meeting the maximum net-negative fossil CO₂ emissions for the respective pathway (Fig. 1b, e). In the rare cases where scenarios have increasing AFOLU or fossil CO₂ emissions over the last 10 years (we only allow scenarios with stagnating or decreasing combined CO₂ emissions over the last few years, meaning fossil or AFOLU CO₂ can individually still have increasing emissions or decreasing negative emissions over the last decade) they are assigned decreasing emissions after 2100 with the rate of increasing emissions they had before plus the change in rate that is randomly prescribed (0 %–3 %; see uppermost lines in Fig. 1b, e). We assume that saturation for nature-based carbon removal is hit in 2150 and that all pathways move linearly towards their randomly chosen floor level after 2100 at a rate that allows the assigned floor to be reached by 2150 (Fig. 1e). For simplicity, we hold non-CO₂ emissions constant at 2100 emission levels until 2500, which gives some residual warming signal but is relatively small compared to the CO₂ contribution.

2.2 MAGICC setup and SRM pathway construction

All global climate model simulations are conducted with the climate emulator MAGICC7.5.3 (Meinshausen et al., 2020). This emulator is commonly used in several leading integrated assessment models and consecutively in the IPCC assessments, including the most recent sixth assessment cycle. The model includes a simplified terrestrial and ocean carbon cycle (Meinshausen et al., 2009, 2011a, 2020). We apply a probabilistic setup with an ensemble of 600 runs derived from a Markov chain Monte Carlo approach, and we display all ensemble members except if indicated otherwise. The range of the ensemble members depicts the equilibrium climate sensitivity uncertainty range of the IPCC 6th Assessment Report (Forster et al., 2021) and the C4MIP carbon cycle ranges (Forster et al., 2021) and as a consequence offers good coverage of climate system and model uncertainty. The ensemble members span a transient climate response to cumulative carbon emissions (TCRE) range of 0.87 to 3.47 [K/1000 PgC] (the 17 %–83 % range is from 1.37 to 2.19).

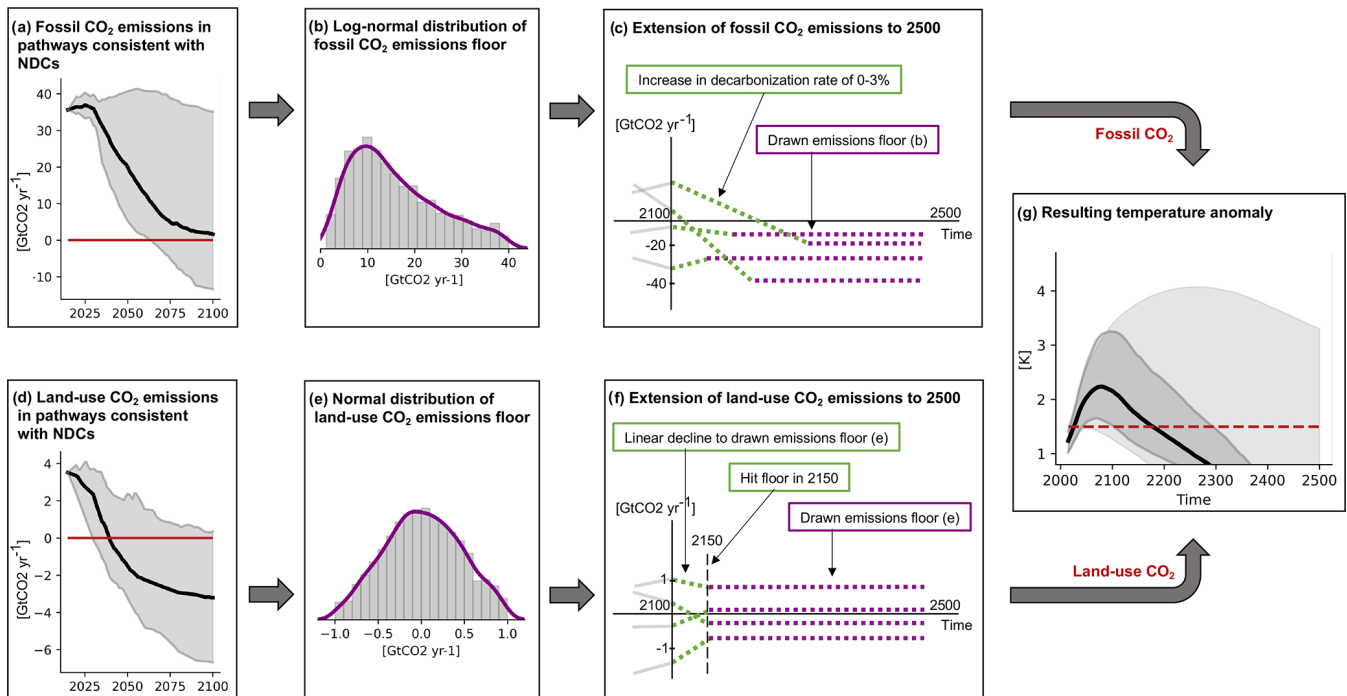


Figure 1. Extension of emission pathways consistent with NDCs from the AR6 WG3 database to 2500. A distribution of extension options is used to sample the range of possible outcomes consistent with the current literature. For simplicity, in all cases, non-CO₂ emissions are kept constant after 2100. **(a)** Fossil CO₂ emissions from selected IPCC AR6 WG3 database scenarios (displayed: 5th–95th percentile). **(b)** Distribution of minimum fossil CO₂ emissions used in this study. **(c)** Illustration of extension algorithm used for fossil CO₂ emissions – each pathway is extended at a fixed rate of decline until it hits some prescribed value, after which emissions are held constant (see Sect. 2.1 for full description). **(d)** Land use CO₂ emissions from selected IPCC AR6 WG3 database scenarios (displayed: 5th–95th percentile). **(e)** Distribution of steady-state land use CO₂ emissions used in this study. **(f)** Illustration of extension algorithm used for land use CO₂ emissions – each pathway is extended so that it reaches a specific value by 2150, after which emissions are held constant (see Sect. 2.1 for full description). **(g)** Resulting temperature trajectories – the light-grey shading covers the 5th–95th percentiles over all scenarios with all 600 ensemble members, and the dark-grey shading covers the 5th–95th percentile of an exemplary scenario (MESSAGEix-GLOBIOM_1.1 EN_INDCi2030_1800f_NDCp), with the black line being the median of it. We cover a wide range of trajectories, from always remaining below 1.5 °C to never coming back below 1.5 °C after crossing 1.5 °C in the early 21st century.

The purpose of SRM in our scenario setup is to cool the temperature overshoot pathways down to the global average warming of 1.5 °C, starting in 2030. Because SRM is implemented in the model by modifying the effective radiative forcing (ERF), it is necessary to determine what forcing pathway is equivalent to following a 1.5 °C compliant trajectory for each member of the ensemble (Fig. 2). This 1.5 °C trajectory represents the SRM pathway. Due to the computational efficiency and the close resemblance to WG3 NDC pathways, we choose an SSP2-4.5 pathway as a starting point for this SRM pathway construction (Fig. 2a). This reduces the required computing time by a factor of 10 while still retaining sufficient accuracy to make useful quantifications of the required SRM deployment times. Using 2030 NDC emission levels as the starting point for our analysis, we also assume that radiative forcing can be modified no sooner than 2030. Depending on the ensemble member, this leads to either a smooth approach to 1.5 °C where an overshoot is avoided in the SRM pathway (Fig. 2b) or to an overshoot that is subse-

quently brought down to 1.5 °C (Fig. 2c). Whether the SRM pathway for a given ensemble member overshoots is determined by its SSP2-4.5 2035 warming level had it followed its 10-year gradient from 2030 to 2040 for 5 more years after 2030. If this 2035 warming level is higher than 1.5 °C, the pathway will overshoot to the respective 2035 level and subsequently descend to 1.5 °C in a sigmoidal pattern, reaching 1.5 °C in 2050.

Since each of the 355 scenarios is prescribed different assumptions (see Sect. 2.1) and since each ensemble member in MAGICC's probabilistic distribution has different physics, we must calculate the SRM on a scenario–ensemble member basis where the SRM required is the difference between the 1.5 °C pathway and the extended NDC scenario without SRM (NDC extension described in Sect. 2.1). The start date of SRM is determined by the date where the extended NDC scenario exceeds the designed SRM pathway for the respective ensemble member. SRM termination is assumed to hap-

pen once 1.5 °C global mean warming is reattained in the NDC scenario.

To address climate uncertainty and to depict the whole range of possible outcomes, we use all members of our ensemble instead of only focusing on medians. Additionally, we calculate the uncertainty surrounding the rise in temperature for a specific amount of CO₂ emissions and non-CO₂ forcing, referred to as the effective transient response to cumulative CO₂ emissions (eTCRE, subsequently called eTCRE-up; Gregory et al., 2009; Matthews et al., 2009, 2020; Vakilifard et al., 2022). We also consider uncertainty in the temperature change as a result of reducing the concentrations of CO₂ and associated non-CO₂ gases in the atmosphere (subsequently called eTCRE-down). Due to uncertain Earth system feedbacks such as a lagged ocean response, it is possible that eTCRE-up and eTCRE-down are not identical (Matthews et al., 2020; Zickfeld et al., 2016) and that this asymmetry is reflected in the MAGICC ensemble. eTCRE-up informs us whether temperature targets are exceeded for a specific amount of cumulative emissions and therefore whether SRM is deployed in our scenarios or not, as well as the point at which peak warming is hit. eTCRE-down informs us how effective NNEs are at cooling, indicating how many cumulative NNEs we need and how long it would take to return to our target temperature increase of 1.5 °C.

We define eTCRE-up and eTCRE-down as follows:

$$\text{eTCRE}_{\text{up}} = \frac{\Delta T_{2030 \rightarrow \text{peak_warming}}}{\sum_{2030}^{\text{peak_warming}} \text{CO}_2 \text{ emissions}} [\text{K } 1000 \text{ PgC}^{-1}], \quad (1)$$

$$\text{eTCRE}_{\text{down}} = \frac{\Delta T_{1.5^\circ\text{C} \rightarrow \text{peak_warming}}}{\sum_{\text{peak_warming}}^{\text{year_of_return_to_1.5}^\circ\text{C}} \text{CO}_2 \text{ emissions}} [\text{K } 1000 \text{ PgC}^{-1}]. \quad (2)$$

While the change in temperature is related to both CO₂ and non-CO₂ gases, the cumulative emissions are only related to CO₂. Due to a few extreme outliers, both metrics are constrained to their 1st–99th percentiles.

3 Results

The 355 NDC scenarios, including extensions and probabilistic MAGICC7 simulations, lead to 213 000 different realisations with a large range of warming outcomes throughout the centuries (Fig. 1g). While few realisations peak at or below 1.5 °C, the vast majority of the baseline simulations without SRM overshoot the temperature target temporarily. Others do not return back to 1.5 °C before 2500 at all. The 5th–95th percentile range of peak warming in our dataset ranges from 1.60 to 3.91 °C, with the median at 2.14 °C. Therefore, even though all realisations originate in 2030 NDC levels, due to the range of possible developments of mitigation and NNEs under SRM, the resulting SRM deployment length ranges from 0 to >470 years (Fig. 3), with 5 %

of realisations not requiring SRM to limit warming to 1.5 °C and 15 % having deployment times that exceed 470 years. In the following analysis, we only include realisations that fall into the 1–470 year range.

Figure 4 breaks down the three indicators – mitigation, negative emissions and climate uncertainty – and their interlinkages with SRM deployment length. The relationship between the emission pathway, i.e. the cumulative emissions from 2030 until net zero, and the SRM deployment length is weak (Fig. 4a). The triangular shape of the data points towards a tendency for very high cumulative emissions (>3000 Gt CO₂ at time of net zero) to lead to longer SRM timescales, whereas scenarios with lower cumulative emissions are spread across the whole range of SRM deployment times, with a skewing towards the shorter end. Realisations above 1500 Gt CO₂ (apart from a few exceptions) require at least a few decades of deployment to keep warming at 1.5 °C, no matter the climate uncertainty. The plot looks stratified because the cumulative emissions value is member independent and therefore stays equal across all ensemble members of each scenario.

The way our scenarios are set up, the choice of maximum-potential NNEs is random and therefore independent of the amount of cumulative emissions. However, average annual NNEs are not entirely arbitrarily spread: shorter deployment timescales are constrained to lower annual NNEs because of the limited time these scenarios have to scale up their net-negative emissions. Similarly, high-emission scenarios take longer to reach high net-negative emissions. This is demonstrated by scenarios with cumulative emissions above 3500 Gt CO₂, almost all of which reach annual NNEs above 15 Gt CO₂ yr^{−1} by 2500 (see Fig. S01 in the Supplement), but most never reach this level on average terms because of the time required to scale up.

Focussing on the interlinkages with negative emissions, Fig. 4b shows cumulative emissions between net zero and the reattainment of 1.5 °C against SRM deployment. The relationship is much clearer, and the triangle shape of Fig. 4b is considerably more defined; low cumulative negative emissions are represented across the whole range of SRM deployment length, but high cumulative negative emissions are constrained to long SRM time frames. For example, cumulative negative-emission requirements above −2000 Gt CO₂ imply more than 100 years of SRM deployment. Similarly, −6000 Gt CO₂ leads to more than 200 years of SRM deployment, and −10 000 Gt CO₂ leads to more than 300 years of SRM deployment. Part of this effect is the simple fact that you only get very large amounts of cumulative negative emissions if you are deploying SRM for long time periods.

Whereas in Fig. 4a the annual average NNEs are partly random, a clear pattern becomes visible in Fig. 4b. The higher the annual average NNEs, the shorter the SRM timescale for the same amount of cumulative emissions. For higher total negative-emission requirements, low NNEs are not sufficient in limiting the deployment to 470 years

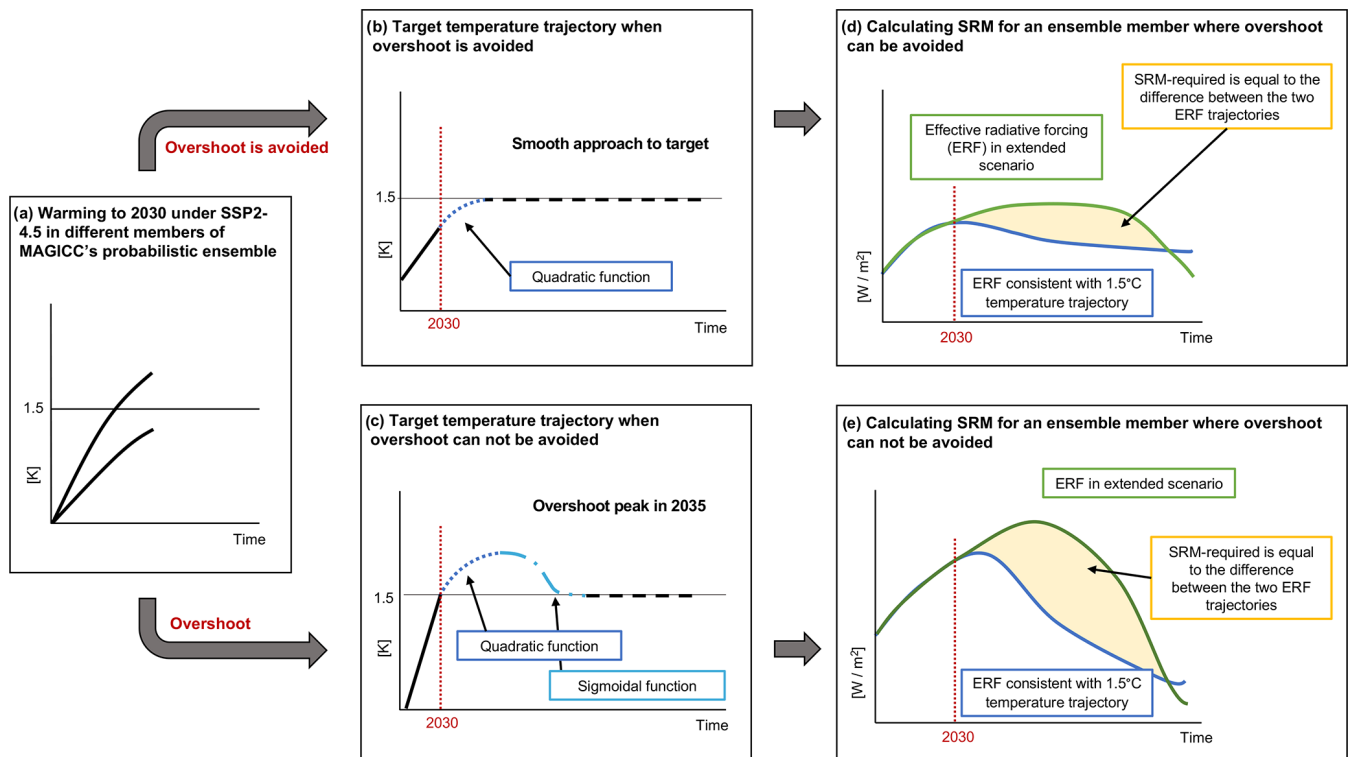


Figure 2. Calculating required SRM. (a) Calculating warming to 2035 using an NDC-like pathway (in this case, SSP2-4.5). (b) Determining a 1.5 °C temperature trajectory for ensemble members that have not already overshoot 1.5 °C by 2035. (c) Determining a 1.5 °C temperature trajectory for ensemble members that have already overshoot 1.5 °C by 2035. (d, e) Calculating required solar radiation modification (SRM) for each scenario–ensemble member combination, whether it overshoots 1.5 °C (e) or remains below 1.5 °C at all times (d).

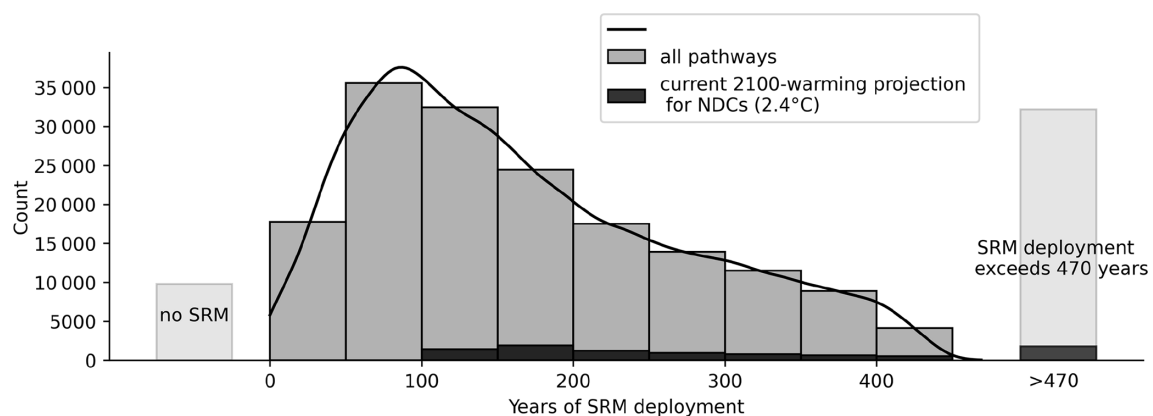


Figure 3. SRM deployment length for all scenarios and all ensemble members. One bar spans a range of 50 years. Marked in black are pathways consistent with current 2100 warming projections for NDCs (2.4 °C; CAT, 2022).

and are thus not shown. Very small amounts of NNEs ($<1 \text{ GtCO}_2 \text{ yr}^{-1}$) are constrained to pathways with no or very small amounts of the negative emissions required to get down to 1.5 °C of warming.

Regarding climate uncertainty, the calculated 5th–95th percentile range of eTCRE-up is 1.0–6.0 [K/1000 PgC], and that of eTCRE-down is −6.9–12.4 [K/1000 PgC]. Figure 4c sets the eTCRE ratio (defined as eTCRE-up / eTCRE-down)

against the SRM time frames. The spread in uncertainty increases with SRM deployment length. Realisations with an absolute eTCRE ratio of >1 have a lower sensitivity to negative emissions than to positive ones, causing them to deploy SRM for longer periods even though net zero is reached earlier than for other scenarios (see Fig. S02). Negative eTCRE ratios (dark-purple data points) are the result of negative eTCRE-down values, all of which arise in realisations that

have positive cumulative emissions in the cooling phase. This could be due to a highly negative zero-emissions commitment (ZEC; Jenkins et al., 2022; Jones et al., 2019; MacDougall et al., 2020) or non-CO₂ effects that allow temperatures to drop despite cumulative positive CO₂ emissions.

4 Discussion

In current literature, SRM is often framed in the context of a stopgap measure (Asayama and Hulme, 2019; Buck et al., 2020; Neuber and Ott, 2020). Our study focuses on the question of what range of time frames would be consistent with an intended temporary SRM deployment due to the uncertainty in mitigation ambition, negative emissions and climate uncertainty.

We show that the range of possible deployment timescales is vast even for pathways that have similar conditions at the start of SRM deployment – in our case, in 2030 (Fig. 3). This is due to the uncertain evolution of mitigation ambition and annual NNEs under SRM and the effects of climate uncertainty. We find that neither of these three indicators (mitigation, net-negative emissions or climate uncertainty) alone can determine SRM deployment length. Mitigation and negative emissions represent a bounding condition on SRM deployment length rather than a linear correlation, to some degree due to the climate sensitivity of increasing and decreasing emissions (Fig. 4c). This means that positive emissions after SRM initialisation on the medium to lower end could imply both short- and long-term SRM deployment (Fig. 4a). Similarly, low cumulative negative-emission requirements are no guarantee for short SRM time frames (Fig. 4b). However, the faster and higher annual NNEs are scaled up, the shorter the time-wise commitment to SRM (Figs. 4b, 5a). Our data suggest that, for the range of emission pathways, NNEs and, in particular, the limited analysis length of 470 years in our experiments, it might be easier to determine a lower limit of deployment length rather than an upper limit.

The relationship between the eTCRE ratio and SRM deployment length versus cumulative emissions that results from our data is complex and requires further study (Figs. 4c, 5b). Several aspects play into the variables used to calculate the two climate uncertainty metrics. For example, the temperature change in the eTCRE calculation is related to CO₂ and non-CO₂ gases, while the cumulative emissions are only a function of CO₂. Additionally, the experimental setup of this study is such that CO₂ and non-CO₂ emissions are not linearly related: non-CO₂ emissions vary between 2030 and 2100 and then stay constant at the 2100 level, while CO₂ emissions fall consistently after 2100.

Our calculated eTCRE-up is higher than the pure range of TCRE that the MAGICC7 ensemble members have, i.e. the TCRE range in the AR6 of the IPCC (0.87–3.47). This is expected and has been observed before because of the impact of non-CO₂ climate forcers (Matthews et al., 2020;

Damon Matthews et al., 2021). Assumptions regarding the constant ratio of cumulative emissions of CO₂ to temperature (TCRE) are suggested to go up to at least 3000 PgC of positive cumulative CO₂ emissions (Leduc et al., 2015; Tokarska et al., 2016). Our values exceed this limit. However, this might not be directly transferable to our eTCRE-up metric, especially since these values are expectedly higher than TCRE (Matthews et al., 2020). Studies with intermediate-complexity climate models have found a higher TCRE-up compared to TCRE-down, suggesting a greater impact of positive CO₂ emissions than negative emissions on temperatures (Zickfeld et al., 2016). This can be explained by a lagged ocean response that leads to continued warming after the start of carbon removal (Zickfeld et al., 2016). However, ocean effects might differ in cases where SRM is deployed and where complex Earth system models show a range of responses after emissions are halted (Jenkins et al., 2022; MacDougall et al., 2020), let alone when they are negative for a sustained period.

The inconclusive relationship of the eTCRE ratio and negative emissions against SRM deployment length (Fig. 5) emphasises the fact that, while ending SRM hinges fundamentally on the decline of temperatures (when SRM is used for the purposes described in this paper), climate reversibility is currently marked by large uncertainties.

The shape of the triangle in Figs. 4a, b and 5a, b is partly due to the effects of climate uncertainty and partly due to the experimental setup with a limit of yearly NNEs at 40 Gt CO₂ yr⁻¹. However, the area of the plot with short SRM deployment under around a century would not be covered even for higher amounts of annual NNEs because the scaling up requires time. To contextualise, a yearly removal of 40 Gt CO₂ equates to today's yearly fossil CO₂ emissions (Friedlingstein et al., 2022) and would entail a massive industrial effort by itself, which would take decades to build up. So even though very high NNEs could shorten SRM timescales, it likely would not be available for short SRM deployments. In those cases, the best bet is to require a small amount of total net-negative emissions to return back down to 1.5 °C. This would imply low cumulative positive emissions and a high eTCRE-down.

The upper limit of NNEs goes to the heart of concerns regarding CDR: the magnitude of yearly removal to which it can be scaled up. Because it is impossible to predict technological development this far into the future, we reflect all plausible options by assuming NNEs that range from barely being able to compensate residual positive emissions to being consistent with current sustainable levels to much larger amounts that future technological development could enable but that far exceed many estimates in the current literature (Fuss et al., 2018; Grant et al., 2021; Coninck et al., 2018; Pathak et al., 2022). It needs to be highlighted that this study looks at net-negative emissions and not CDR. This means that our estimates of net-negative emissions are a lower bound in terms of the amount of CDR needed. There

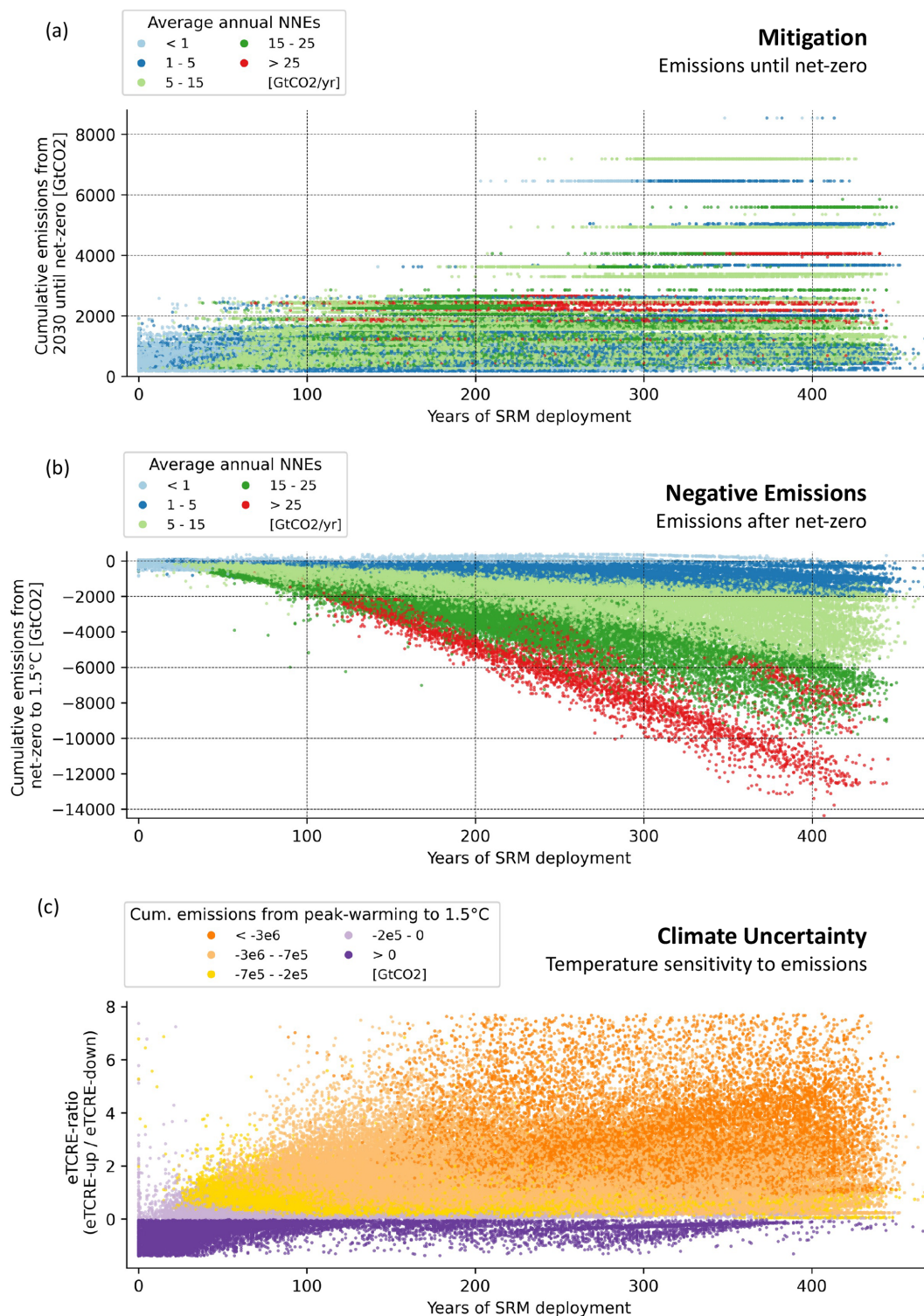


Figure 4. Interdependencies of mitigation, negative emissions and climate uncertainty with SRM deployment length. **(a)** Relationship between cumulative CO₂ emissions from 2030 until net-zero CO₂ and SRM deployment length. Colour coding is according to annual average NNEs in Gt CO₂ yr⁻¹. **(b)** Relationship between cumulative CO₂ emissions from net-zero CO₂ until the reattainment of 1.5 °C and SRM deployment length. Colour coding is according to annual average NNEs in Gt CO₂ yr⁻¹. **(c)** Relationship between eTCRE ratio and SRM deployment length. Colour coding is according to cumulative CO₂ emissions from the time of peak warming until the reattainment of 1.5 °C. Plot shows data points that fall in the 1st–99th percentile range.

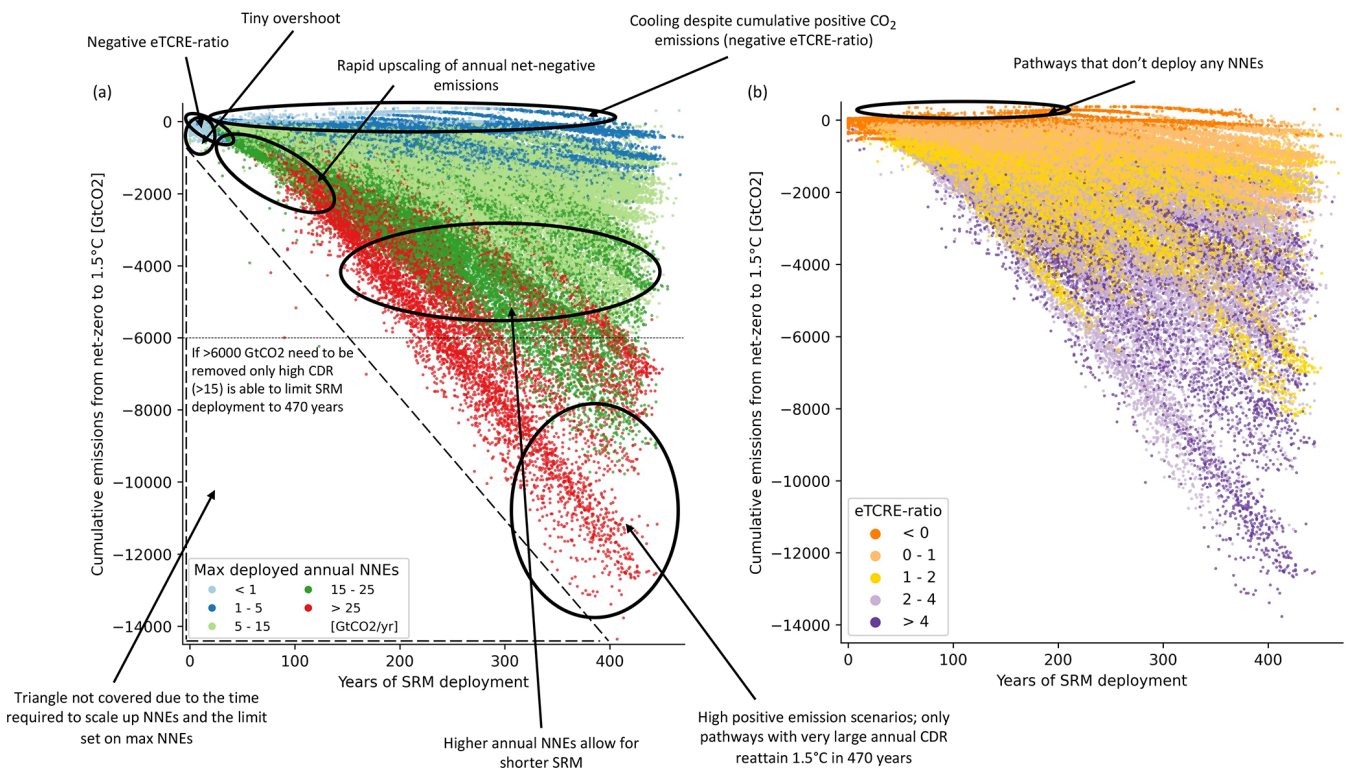


Figure 5. Relationship between cumulative CO₂ emissions from net-zero CO₂ until the reattainment of 1.5 °C and SRM deployment length. (a) Colour coding is according to the maximum deployed annual NNEs. (b) Colour coding is according to the eTCRE ratio. See the clean figure without descriptions in the Supplement (Fig. S03).

is a broad discussion in the current literature regarding the negative side effects and sustainability concerns of CDR in mitigation scenarios (Brack and King, 2020; Fuss et al., 2018; Smith et al., 2015), as well as the question of equity in the allocation of CDR burden (Fyson et al., 2020). Major concerns are the considerable land, water, energy and financial requirements and constraints in long-term storage of removed CO₂ that increase for higher yearly removal rates. These recognised environmental and social concerns of CDR are at least as applicable for pathways where CDR exceeds current sustainable ranges and needs to be sustained for decades up to centuries. This paper quantifies the importance of decades-long large-scale CDR for peak-shaving SRM scenarios, which has previously been pointed out by Asayama and Hulme (2019) and others. In addition, we find that initialisation and commitment to SRM happen under the promise that CDR can be scaled up high enough to end SRM again. Belaia et al. (2021) even demonstrate that a cost-optimal portfolio to meet a 2 °C GSAT increase would first consist of SRM and mitigation and then, later, CDR deployment. With CDR being unproven at scale and with peak-and-decline scenarios being marked by large uncertainties, this is a risky promise. Our scenarios show what happens if the scalability of CDR is not as high as assumed or if TCRE-down is

low: SRM deployment will have to be extended for a much longer period of time (Fig. 4b).

In scenarios where the level of warming in 2100 follows the level of mitigation ambition reflected in 2030 NDC commitments until the end of the century (CAT, 2022), no pathway deploys SRM for a shorter period than 100 years, while most require 150–300 years in order to return to a 1.5 °C GSAT increase (black bars in Fig. 3; the 25 %–75 % percentile range is from 159 to 294 years, excluding all pathways that exceed 470 years in the statistic). Even for scenarios with a somewhat smaller overshoot above 1.5 °C, potential deployment length remains considerable. Half of all the scenario realisations that would peak around 1.8 °C require SRM deployment for 96–195 years to stay at 1.5 °C. Therefore, short peak-shaving SRM deployment perhaps implies a length on the order of 100–200 years rather than 10–50 years. These time frames are much longer than the hotly debated CDR deployment lengths in GHG emission reduction pathways for limiting warming to 1.5 °C in 2100 after a high or no/limited overshoot assessed in the IPCC SR1.5 (Rogelj et al., 2018) or the IPCC AR6 WG3 (Riahi et al., 2022).

MacMartin et al. (2018) created an exemplary scenario where emissions would lead to a peak warming of 2.7 °C without SRM and would deploy 15 Gt CDR per year. Their scenario requires around 235 years of SRM deployment

to limit warming to 1.5 °C. Constraining our dataset to their benchmark data results in an SRM deployment of 99–404 years, with a mean of 221 years – a range that encompasses their result with a mean that is not far off from their estimate. Tilmes et al. (2016) constructed a scenario that peaks at 3 °C and uses SRM to cool down to 2.0 °C with 18.5 GtCO₂ CDR per year. Simulated with the CESM Earth system model, they indicate a deployment time of 160 years to compensate for the overshoot over 2 °C. While these results are not fully comparable, compensating for 1 °C of overshoot with NNEs of 18.5 GtCO₂ per year in our scenarios results in an average deployment length of 204 years and a full range of 98–393 years. Our results thus compare well with previous explorations of this question documented in the literature, yet they also provide a much more holistic perspective on the uncertainties involved. As we demonstrate, these are just few of the many possible future outcomes of SRM deployment, and including climate uncertainty shows where the limits of our control lie.

The challenge in defining SRM deployment length at its initialisation poses a clear risk, as there are several issues that might arise with a multi-century SRM deployment. One of the arguably biggest difficulties of SRM deployment is international cooperation and coordination (Möller, 2020; Reynolds, 2019; Shepherd et al., 2009). Maintaining international cooperation will be even more difficult if deployment needs to be sustained over many decades, as the priorities and interests of countries and their leaders might change. Furthermore, long-lasting SRM deployment would require substantial financial resources; due to the difficulty in predicting SRM deployment length, as pointed out in this study, costs could end up being much higher than originally anticipated if deployment ends up being longer than planned. This needs to be put into context with the overall cost of responding to climate change and the avoided costs of climate change damages by means of SRM (Arino et al., 2016; Belaia et al., 2021). Moreover, a key risk of SRM is the so-called “termination shock”, a rapid warming response to a sudden stop of SRM deployment (Parker and Irvine, 2018). The longer the deployment, the longer the risk of such an occurrence. And lastly, long-term deployment would bind future generations to SRM, which raises substantial ethical and moral questions (Flegel et al., 2019; Goeschl et al., 2013; Svoboda et al., 2011). The idea of imposing a technology on individuals who have not yet been born and do not have a say in the matter can be considered to be a violation of their rights and autonomy. This ethical risk needs to be considered in conjunction with the additional climate-change-related risks from ongoing warming that may also be imposed on future generations who did not contribute to the problem to begin with.

In addition to all the risks, costs and potential side effects that come with SRM, due to the dependency, future generations would be burdened by large-scale deployment of CDR, which might compete with efforts to secure their own requirements by increasing the risks of biodiversity loss and

food and water scarcity (Dooley and Kartha, 2018; Shue, 2017; Asayama and Hulme, 2019; Svoboda et al., 2011). With this study, we add quantitative data to the literature calling for precautionary and ethical approaches to technology development. The identified risks need to be weighed against the risk of not deploying SRM. Our research highlights the substantial dependencies of SRM and CDR deployment, which imply the side effects, risks, costs and uncertainties of both SRM and CDR.

In this analysis, we use SRM for the prevention of overshooting the 1.5 °C target, and the deployment lengths we indicate only hold under the stated conditions of the analysis. Possible avenues for prior phase outs have been discussed in Keith and MacMartin (2015), MacMartin et al. (2018, 2022) and Parker and Irvine (2018). However, these avenues would violate the 1.5 °C target and, as suggested by Parker and Irvine (2018), depending on the amount of Wm^{−2} compensated for, could take several decades. Therefore, even if SRM was, due to technical and/or environmental considerations, phased out earlier, the phase out itself could become a multi-decadal undertaking.

Being a reduced-complexity model, MAGICC7 has its caveats and constraints related to the physical and spatial resolution of relevant climate and carbon cycle processes. Nevertheless, MAGICC has been used successfully in many instances to robustly analyse long-term perspectives (Meinshausen et al., 2011b, 2020; Nauels et al., 2017). Therefore, we also consider it to be appropriate for this first quantification of hypothetical SRM deployment length, which could motivate further study in more complex models.

It is important to highlight that, even if global temperature was stabilised with the help of SRM, this will not provide a solution with respect to the regional impacts (Jones et al., 2018) and the other impacts of high GHG concentration levels, such as ocean acidification (Tjiputra et al., 2016). In our study, however, we do not aim to provide a comprehensive analysis of the impacts or side effects of such a climate intervention, nor do we provide a likely or desirable implementation strategy; rather, we explore a concept to determine hypothetical SRM deployment lengths.

5 Conclusions

In this paper, we generate a large dataset of pathways to analyse SRM deployment length in scenarios that are consistent with 2030 NDC levels and use SRM to cool down to 1.5 °C of warming. We find a large spread of SRM deployment lengths, ranging from no NNE and SRM requirements at all to massive NNE and SRM requirements past 2500 to limit global warming to 1.5 °C. Most of our simulations require around 150–300 years of SRM. Deployment time frames are considerably dependent on mitigation, negative emissions and climate uncertainty, yet none of these factors alone can predict their length. Large cumulative positive

emissions lead to long SRM deployments. However, small cumulative emissions are no guarantee for short deployment timescales. Similarly, realisations that require large cumulative negative emissions lead to long SRM deployments. However, small cumulative negative-emission requirements do not necessarily imply short SRM time frames. A large part of this uncertainty can be attributed to the uncertainty surrounding eTCRE-up and eTCRE-down.

For all realisations that follow current NDC median 2100 warming projections (2.4 °C), none deploy SRM for a shorter period than 100 years, even under the most optimistic assumptions regarding the eTCRE ratio. For SRM deployment to truly be temporary, carbon removal technologies need to be massively scaled up within a relatively short time frame, except in cases of very low emission requirements and extremely high negative ZEC. Larger average annual NNEs do generally imply shorter SRM timescales.

Our study shows that the range of possible deployment timescales is vast even if pathways start at a similar point at the beginning of SRM deployment because the evolution of mitigation under SRM, the availability of carbon removal technologies and the effects of climate reversibility are not precisely known. Since these effects will be mostly uncertain at the time of SRM initialisation, a precedent prediction of deployment length seems unlikely, with possibilities ranging from decades to multiple centuries. This is a knowledge gap that must be considered before any SRM proposal is seriously considered.

Code and data availability. The code is publicly available at <https://doi.org/10.5281/zenodo.7707967> (Baur and Nicholls, 2023). Raw data have been taken from the IPCC AR6 WGIII database <https://doi.org/10.5281/zenodo.7197970> (Byers et al., 2022).

Supplement. The supplement related to this article is available online at: <https://doi.org/10.5194/esd-14-367-2023-supplement>.

Author contributions. All the authors designed the experiments, and SB and ZN carried them out. SB prepared the paper with contributions from all the authors.

Competing interests. The contact author has declared that none of the authors has any competing interests.

Disclaimer. Publisher's note: Copernicus Publications remains neutral with regard to jurisdictional claims in published maps and institutional affiliations.

Acknowledgements. Susanne Baur is supported by CERFACS through the project MIRAGE. Alexander Nauels, Zebedee Nicholls,

Benjamin M. Sanderson and Carl-Friedrich Schleussner acknowledge support by the European Union's Horizon 2020 Research and Innovation Programme; the respective Horizon 2020 projects are PROVIDE (grant no. 101003687) for Carl-Friedrich Schleussner and Benjamin M. Sanderson, the project ESM2025 (grant no. 101003536) for Zebedee Nicholls and Benjamin M. Sanderson, and the project CONSTRAIN (grant no. 820829) for Alexander Nauels and Carl-Friedrich Schleussner.

Financial support. This research has been supported by CERFACS (MIRAGE) and the Horizon 2020 projects PROVIDE (grant no. 101003687), CONSTRAIN (grant no. 820829) and ESM2025 (grant no. 101003536).

Review statement. This paper was edited by Ben Kravitz and reviewed by Daniele Visioni and two anonymous referees.

References

- Allen, M. R., Dube, O. P., Solecki, W., Aragoïn-Durand, F., Cramer, W., Humphreys, S., Kainuma, M., Kala, J., Mahowald, N., Mulugetta, Y., Perez, R., Wairiu, M., and Zickfeld, K.: Framing and Context, in: *Global Warming of 1.5 °C, An IPCC Special Report on the impacts of global warming of 1.5 °C above pre-industrial levels and related global greenhouse gas emission pathways, in the context of strengthening the global response to the threat of climate change*, Vol. 2, <https://doi.org/10.1017/9781009157940.003>, 2018.
- Andrews, T. M., Delton, A. W., and Kline, R.: Anticipating moral hazard undermines climate mitigation in an experimental geoengineering game, *Ecol. Econ.*, 196, 107421, <https://doi.org/10.1016/j.ecolecon.2022.107421>, 2022.
- Arino, Y., Akimoto, K., Sano, F., Homma, T., Oda, J., and Tomoda, T.: Estimating option values of solar radiation management assuming that climate sensitivity is uncertain, *P. Natl. Acad. Sci. USA*, 113, 5886–5891, <https://doi.org/10.1073/pnas.1520795113>, 2016.
- Asayama, S. and Hulme, M.: Engineering climate debt: temperature overshoot and peak-shaving as risky subprime mortgage lending, *Clim. Policy*, 19, 937–946, <https://doi.org/10.1080/14693062.2019.1623165>, 2019.
- Austin, M. M. K. and Converse, B. A.: In search of weakened resolve: Does climate-engineering awareness decrease individuals' commitment to mitigation?, *J. Environ. Psychol.*, 78, 101690, <https://doi.org/10.1016/j.jenvp.2021.101690>, 2021.
- Baatz, C.: Can we have it both ways? On potential trade-offs between mitigation and solar radiation management, *Environ. Values*, 25, 29–49, <https://doi.org/10.3197/096327115X14497392134847>, 2016.
- Baur, S. and Nicholls, Z.: *susannebaur/deployment-length-srm: Clean version*, Zenodo [code], <https://doi.org/10.5281/zenodo.7707967>, 2023.
- Belaia, M., Moreno-Cruz, J. B., and Keith, D. W.: Optimal climate policy in 3D: mitigation, carbon removal, and solar geoengineering, *Clim. Change Econ.*, 12, 2150008, <https://doi.org/10.1142/S2010007821500081>, 2021.

- Bellamy, R., Chilvers, J., and Vaughan, N. E.: Deliberative Mapping of options for tackling climate change: Citizens and specialists “open up” appraisal of geoengineering, *Public Underst. Sci.*, 25, 269–286, <https://doi.org/10.1177/0963662514548628>, 2016.
- Boucher, O., Randall, D., Artaxo, P., Bretherton, C., Feingold, G., Forster, P., Kerminen, V. M., Kondo, Y., Liao, H., Lohmann, U., Rasch, P., Satheesh, S. K., Sherwood, S., Stevens, B., and Zhang, X. Y.: Clouds and aerosols, in: *Climate Change 2013: The Physical Science Basis*, Working Group I Contribution to the Fifth Assessment Report of the Intergovernmental Panel on Climate Change, edited by: Stocker, T. F., Qin, D., Plattner, G.-K., Tignor, M., Allen, S. K., Boschung, J., Nauels, A., Xia, Y., Bex, V., and Midgley, P. M., Cambridge University Press, Cambridge, United Kingdom and New York, NY, USA, 571–658, <https://doi.org/10.1017/CBO9781107415324.016>, 2013.
- Brack, D. and King, R.: Managing Land-based CDR: BECCS, Forests and Carbon Sequestration: Managing Land-based CDR, *Glob. Policy*, 12, 45–56, <https://doi.org/10.1111/1758-5899.12827>, 2020.
- Buck, H. J., Martin, L. J., Geden, O., Kareiva, P., Koslov, L., Krantz, W., Kravitz, B., Noël, J., Parson, E. A., Preston, C. J., Sanchez, D. L., Scarlett, L., and Talati, S.: Evaluating the efficacy and equity of environmental stopgap measures, *Nat. Sustain.*, 3, 499–504, <https://doi.org/10.1038/s41893-020-0497-6>, 2020.
- Burns, E. T., Flegal, J. A., Keith, D. W., Mahajan, A., Tingley, D., and Wagner, G.: What do people think when they think about solar geoengineering? A review of empirical social science literature, and prospects for future research, *Earth’s Future*, 4, 536–542, <https://doi.org/10.1002/2016EF000461>, 2016.
- Byers, E., Krey, V., Krieglner, E., Riahi, K., Schaeffer, R., Kikstra, J., Lamboll, R., Nicholls, Z., Sanstad, M., Smith, C., van der Wijst, K. I., Al Khouradje, A., Lecocq, F., Portugal-Pereira, J., Saheb, Y., Strömann, A., Winkler, H., Auer, C., Brutschin, E., Gidden, M., Hackstock, P., Harmsen, M., Huppmann, D., Kolp, P., Lepault, C., Lewis, J., Marangoni, G., Müller-Casseres, E., Skeie, R., Werning, M., Calvin, K., Forster, P., Guivarch, C., Hasegawa, T., Meinshausen, M., Peters, G., Rogelj, J., Samset, B., Steinberger, J., Tavoni, M., and van Vuuren, D.: AR6 Scenarios Database, in: *Climate Change 2022: Mitigation of Climate Change (1.1)*, Intergovernmental Panel on Climate Change, Zenodo [data set], <https://doi.org/10.5281/zenodo.7197970>, 2022.
- Canadell, J. G., Monteiro, P. M. S., Costa, M. H., Cotrim da Cunha, L., Cox, P. M., Eliseev, A. V., Henson, S., Ishii, M., Jaccard, S., Koven, C., Lohila, A., Patra, P. K., Piao, S., Rogelj, J., Syampungani, S., Zaehle, S., and Zickfeld, K.: Global Carbon and other Biogeochemical Cycles and Feedbacks, in: *Climate Change 2021: The Physical Science Basis*. Contribution of Working Group I to the Sixth Assessment Report of the Intergovernmental Panel on Climate Change, edited by: Masson-Delmotte, V., Zhai, P., Pirani, A., Connors, S. L., Péan, C., Berger, S., Caud, N., Chen, Y., Goldfarb, L., Gomis, M. I., Huang, M., Leitzell, K., Lonnoy, E., Matthews, J. B. R., Maycock, T. K., Waterfield, T., Yelekçi, O., Yu, R., and Zhou, B., Cambridge University Press, Cambridge, United Kingdom and New York, NY, USA, 673–816, 2021.
- CAT (Climate Action Tracker): 2100 Warming Projections: Emissions and expected warming based on pledges and current policies, <https://climateactiontracker.org/global/temperatures/> (last access: 16 December 2022), 2022.
- Coninck, H., Revi, A., Babiker, M., Bertoldi, P., Buckenridge, M., Cartwright, A., Dong, W., Ford, J., Fuss, S., Hourcade, J.-C., Ley, D., Mechler, R., Newman, P., Revokatova, A., Schultz, S., Steg, L., and Sugiyama, T.: Chap. 4 – Strengthening and implementing the global response, in: *Global warming of 1.5 °C*, 313–443, https://www.ipcc.ch/site/assets/uploads/sites/2/2018/11/SR15_Chapter4_Low_Res.pdf (last access: 20 October 2022), 2018.
- Corner, A. and Pidgeon, N.: Geoengineering, climate change scepticism and the “moral hazard” argument: an experimental study of UK public perceptions, *Philos. T. R. Soc. A.*, 372, 20140063, <https://doi.org/10.1098/rsta.2014.0063>, 2014.
- Dooley, J. J.: Estimating the supply and demand for deep geologic CO₂ storage capacity over the course of the 21st century: A meta-analysis of the literature, *Energy Proced.*, 37, 5141–5150, <https://doi.org/10.1016/j.egypro.2013.06.429>, 2013.
- Dooley, K. and Kartha, S.: Land-based negative emissions: Risks for climate mitigation and impacts on sustainable development, *Int. Environ. Agreem.-P.*, 18, 79–98, <https://doi.org/10.1007/s10784-017-9382-9>, 2018.
- Douville, H., Raghavan, K., Renwick, J., Allan, R. P., Arias, P. A., Barlow, M., Cerezo-Mota, R., Cherchi, A., Gan, T. Y., Gergis, J., Jiang, D., Khan, A., Pokam Mba, W., Rosenfeld, D., Tierney, J., and Zolina, O.: Water Cycle Changes, in: *Climate Change 2021: The Physical Science Basis*, Contribution of Working Group I to the Sixth Assessment Report of the Intergovernmental Panel on Climate Change, edited by: Masson-Delmotte, V., Zhai, P., Pirani, A., Connors, S. L., Péan, C., Berger, S., Caud, N., Chen, Y., Goldfarb, L., Gomis, M. I., Huang, M., Leitzell, K., Lonnoy, E., Matthews, J. B. R., Maycock, T. K., Waterfield, T., Yelekçi, O., Yu, R., and Zhou, B., Cambridge University Press, Cambridge, United Kingdom and New York, NY, USA, 1055–1210, 2021.
- Fairbrother, M.: Geoengineering, moral hazard, and trust in climate science: evidence from a survey experiment in Britain, *Clim. Change*, 139, 477–489, <https://doi.org/10.1007/s10584-016-1818-7>, 2016.
- Flegal, J. A., Hubert, A. M., Morrow, D. R., and Moreno-Cruz, J. B.: Solar Geoengineering: Social Science, Legal, Ethical, and Economic Frameworks, *Ann. Rev. Environ. Resour.*, 44, 399–423, <https://doi.org/10.1146/annurev-environ-102017-030032>, 2019.
- Forster, P., Storelvmo, T., Armour, K., Collins, W., Dufresne, J.-L., Frame, D., Lunt, D. J., Mauritsen, T., Palmer, M. D., Watanabe, M., Wild, M., and Zhang, H.: The Earth’s Energy Budget, Climate Feedbacks, and Climate Sensitivity, in: *Climate Change 2021: The Physical Science Basis*, Contribution of Working Group I to the Sixth Assessment Report of the Intergovernmental Panel on Climate Change, edited by: Masson-Delmotte, V., Zhai, P., Pirani, A., Connors, S. L., Péan, C., Berger, S., Caud, N., Chen, Y., Goldfarb, L., Gomis, M. I., Huang, M., Leitzell, K., Lonnoy, E., Matthews, J. B. R., Maycock, T. K., Waterfield, T., Yelekçi, O., Yu, R., and Zhou, B., Cambridge University Press, Cambridge, United Kingdom and New York, NY, USA, 923–1054, 2021.
- Friedlingstein, P., O’Sullivan, M., Jones, M. W., Andrew, R. M., Gregor, L., Hauck, J., Le Quéré, C., Luijkx, I. T., Olsen, A., Peters, G. P., Peters, W., Pongratz, J., Schwingshackl, C., Sitch, S., Canadell, J. G., Ciais, P., Jackson, R. B., Alin, S. R., Alkama, R., Arneeth, A., Arora, V. K., Bates, N. R., Becker, M., Bellouin, N., Bittig, H. C., Bopp, L., Chevallier, F., Chini, L. P., Cronin, M.,

- Evans, W., Falk, S., Feely, R. A., Gasser, T., Gehlen, M., Gkritzalis, T., Gloege, L., Grassi, G., Gruber, N., Gürses, Ö., Harris, I., Hefner, M., Houghton, R. A., Hurtt, G. C., Iida, Y., Ilyina, T., Jain, A. K., Jersild, A., Kadono, K., Kato, E., Kennedy, D., Klein Goldewijk, K., Knauer, J., Korsbakken, J. I., Landschützer, P., Lefèvre, N., Lindsay, K., Liu, J., Liu, Z., Marland, G., Mayot, N., McGrath, M. J., Metzl, N., Monacci, N. M., Munro, D. R., Nakaoka, S.-I., Niwa, Y., O'Brien, K., Ono, T., Palmer, P. I., Pan, N., Pierrot, D., Pocock, K., Poulter, B., Resplandy, L., Robertson, E., Rödenbeck, C., Rodriguez, C., Rosan, T. M., Schwinger, J., Séférian, R., Shutler, J. D., Skjelvan, I., Steinhoff, T., Sun, Q., Sutton, A. J., Sweeney, C., Takao, S., Tanhua, T., Tans, P. P., Tian, X., Tian, H., Tilbrook, B., Tsujino, H., Tubiello, F., van der Werf, G. R., Walker, A. P., Wanninkhof, R., Whitehead, C., Willstrand Wranne, A., Wright, R., Yuan, W., Yue, C., Yue, X., Zaehle, S., Zeng, J., and Zheng, B.: Global Carbon Budget 2022, *Earth Syst. Sci. Data*, 14, 4811–4900, <https://doi.org/10.5194/essd-14-4811-2022>, 2022.
- Fuss, S., Canadell, J. G., Peters, G. P., Tavoni, M., Andrew, R. M., Ciais, P., Jackson, R. B., Jones, C. D., Kraxner, F., Nakicenovic, N., Le Quééré, C., Raupach, M. R., Sharifi, A., Smith, P., and Yamagata, Y.: Betting on negative emissions, *Nat. Clim. Change*, 4, 850–853, <https://doi.org/10.1038/nclimate2392>, 2014.
- Fuss, S., Lamb, W. F., Callaghan, M. W., Hilaire, J., Creutzig, F., Amann, T., Beringer, T., De Oliveira Garcia, W., Hartmann, J., Khanna, T., Luderer, G., Nemet, G. F., Rogelj, J., Smith, P., Vicente, J. V., Wilcox, J., Del Mar Zamora Dominguez, M., and Minx, J. C.: Negative emissions – Part 2: Costs, potentials and side effects, *Environ. Res. Lett.*, 13, 063002, <https://doi.org/10.1088/1748-9326/aabf9f>, 2018.
- Fyson, C. L., Baur, S., Gidden, M., and Schleussner, C. F.: Fair-share carbon dioxide removal increases major emitter responsibility, *Nat. Clim. Change*, 10, 836–841, <https://doi.org/10.1038/s41558-020-0857-2>, 2020.
- Goeschl, T., Heyen, D., and Moreno-Cruz, J.: The Intergenerational Transfer of Solar Radiation Management Capabilities and Atmospheric Carbon Stocks, *Environ. Resour. Econ.*, 56, 85–104, <https://doi.org/10.1007/s10640-013-9647-x>, 2013.
- Grant, N., Hawkes, A., Mittal, S., and Gambhir, A.: The policy implications of an uncertain carbon dioxide removal potential, *Joule*, 5, 2593–2605, <https://doi.org/10.1016/j.joule.2021.09.004>, 2021.
- Gregory, J. M., Jones, C. D., Cadule, P., and Friedlingstein, P.: Quantifying Carbon Cycle Feedbacks, *J. Clim.*, 22, 5232–5250, <https://doi.org/10.1175/2009JCLI2949.1>, 2009.
- IPCC: Climate Change 2021: The Physical Science Basis. Contribution of Working Group I to the Sixth Assessment Report of the Intergovernmental Panel on Climate Change, edited by: Masson-Delmotte, V., Zhai, P., Pirani, A., Connors, S. L., Péan, C., Berger, S., Caud, N., Chen, Y., Goldfarb, L., Gomis, M. I., Huang, M., Leitzell, K., Lonnoy, E., Matthews, J. B. R., Maycock, T. K., Waterfield, T., Yelekçi, O., Yu, R., and Zhou, B., Cambridge University Press, Cambridge, United Kingdom and New York, NY, USA, 2391 pp., <https://doi.org/10.1017/9781009157896>, 2021.
- IPCC: Climate Change 2022: Mitigation of Climate Change. Contribution of Working Group III to the Sixth Assessment Report of the Intergovernmental Panel on Climate Change, edited by: Shukla, P. R., Skea, J., Slade, R., Al Khourdajie, A., van Diemen, R., McCollum, D., Pathak, M., Some, S., Vyas, P., Fradera, R., Belkacemi, M., Hasija, A., Lisboa, G., Luz, S., and Malley, J., Cambridge University Press, Cambridge, UK and New York, NY, USA, <https://doi.org/10.1017/9781009157926>, 2022.
- Irvine, P. J., Kravitz, B., Lawrence, M. G., and Muri, H.: An overview of the Earth system science of solar geoengineering, *Wiley Interdisciplinary Reviews, Climate Change*, 7, 815–833, <https://doi.org/10.1002/wcc.423>, 2016.
- Jenkins, S., Sanderson, B., Peters, G., Frölicher, T. L., Friedlingstein, P., and Allen, M.: The Multi-Decadal Response to Net Zero CO₂ Emissions and Implications for Emissions Policy, *Geophys. Res. Lett.*, 49, e2022GL101047, <https://doi.org/10.1029/2022GL101047>, 2022.
- Johansson, D. J. A., Azar, C., Lehtveer, M., and Peters, G. P.: The role of negative carbon emissions in reaching the Paris climate targets: The impact of target formulation in integrated assessment models, *Environ. Res. Lett.*, 15, 124024, <https://doi.org/10.1088/1748-9326/abc3f0>, 2020.
- Jones, A. C., Hawcroft, M. K., Haywood, J. M., Jones, A., Guo, X., and Moore, J. C.: Regional Climate Impacts of Stabilizing Global Warming at 1.5 K Using Solar Geoengineering, *Earth's Future*, 6, 230–251, <https://doi.org/10.1002/2017EF000720>, 2018.
- Jones, C. D., Frölicher, T. L., Koven, C., MacDougall, A. H., Matthews, H. D., Zickfeld, K., Rogelj, J., Tokarska, K. B., Gillett, N. P., Ilyina, T., Meinshausen, M., Mengis, N., Séférian, R., Eby, M., and Burger, F. A.: The Zero Emissions Commitment Model Intercomparison Project (ZECMIP) contribution to C4MIP: quantifying committed climate changes following zero carbon emissions, *Geosci. Model Dev.*, 12, 4375–4385, <https://doi.org/10.5194/gmd-12-4375-2019>, 2019.
- Kahan, D. M., Jenkins-Smith, H., Tarantola, T., Silva, C. L., and Braman, D.: Geoengineering and Climate Change Polarization: Testing a Two-Channel Model of Science Communication, *Ann. Am. Acad. Polit. SS.*, 658, 192–222, <https://doi.org/10.1177/0002716214559002>, 2015.
- Kearns, J., Teletzke, G., Palmer, J., Thomann, H., Kheshgi, H., Chen, Y.-H. H., Paltsev, S., and Herzog, H.: Developing a Consistent Database for Regional Geologic CO₂ Storage Capacity Worldwide, *Energy Proced.*, 114, 4697–4709, <https://doi.org/10.1016/j.egypro.2017.03.1603>, 2017.
- Keith, D. W.: Geoengineering the climate: History and Prospect, *Annu. Rev. Energy Environ.*, 25, 245–84, 2000.
- Keith, D. W. and MacMartin, D. G.: A temporary, moderate and responsive scenario for solar geoengineering, *Nat. Clim. Change*, 5, 201–206, <https://doi.org/10.1038/nclimate2493>, 2015.
- Lawrence, M. G., Schäfer, S., Muri, H., Scott, V., Oeschles, A., Vaughan, N. E., Boucher, O., Schmidt, H., Haywood, J., and Scheffran, J.: Evaluating climate geoengineering proposals in the context of the Paris Agreement temperature goals, *Nat. Commun.*, 9, 3734, <https://doi.org/10.1038/s41467-018-05938-3>, 2018.
- Leduc, M., Matthews, H. D., and de Elía, R.: Quantifying the Limits of a Linear Temperature Response to Cumulative CO₂ Emissions, *J. Clim.*, 28, 9955–9968, <https://doi.org/10.1175/JCLI-D-14-00500.1>, 2015.
- Lee, J.-Y., Marotzke, J., Bala, G., Cao, L., Corti, S., Dunne, J. P., Engelbrecht, F., Fischer, E., Fyfe, J. C., Jones, C., Maycock, A., Mutemi, J., Ndiaye, O., Panickal, S., and Zhou, T.: Future Global Climate: Scenario-Based Projections and Near-Term Informa-

- tion, in: *Climate Change 2021: The Physical Science Basis. Contribution of Working Group I to the Sixth Assessment Report of the Intergovernmental Panel on Climate Change*, edited by: Masson-Delmotte, V., Zhai, P., Pirani, A., Connors, S. L., Peñan, C., Berger, S., Caud, N., Chen, Y., Goldfarb, L., Gomis, M. I., Huang, M., Leitzell, K., Lonnoy, E., Matthews, J. B. R., Maycock, T. K., Waterfield, T., Yelekçi, O., Yu, R., and Zhou, B., Cambridge University Press, Cambridge, United Kingdom and New York, NY, USA, 553–672, 2021.
- MacDougall, A. H., Frölicher, T. L., Jones, C. D., Rogelj, J., Matthews, H. D., Zickfeld, K., Arora, V. K., Barrett, N. J., Brovkin, V., Burger, F. A., Eby, M., Eliseev, A. V., Hajima, T., Holden, P. B., Jeltsch-Thömmes, A., Koven, C., Mengis, N., Menviel, L., Michou, M., Mokhov, I. I., Oka, A., Schwinger, J., Séférian, R., Shaffer, G., Sokolov, A., Tachiiri, K., Tjiputra, J., Wiltshire, A., and Ziehn, T.: Is there warming in the pipeline? A multi-model analysis of the Zero Emissions Commitment from CO₂, *Biogeosciences*, 17, 2987–3016, <https://doi.org/10.5194/bg-17-2987-2020>, 2020.
- MacMartin, D. G., Ricke, K. L., and Keith, D. W.: Solar geoengineering as part of an overall strategy for meeting the 1.5°C Paris target, *Philos. T. R. Soc. A*, 376, 20160454, <https://doi.org/10.1098/rsta.2016.0454>, 2018.
- MacMartin, D. G., Visoni, D., Kravitz, B., Richter, J. H., Felgenhauer, T., Lee, W. R., Morrow, D. R., Parson, E. A., and Sugiyama, M.: Scenarios for modeling solar radiation modification, *P. Natl. Acad. Sci. USA*, 119, e2202230119, <https://doi.org/10.1073/pnas.2202230119>, 2022.
- Matthews, H. D., Gillett, N. P., Stott, P. A., and Zickfeld, K.: The proportionality of global warming to cumulative carbon emissions, *Nature*, 459, 829–832, <https://doi.org/10.1038/nature08047>, 2009.
- Matthews, H. D., Tokarska, K. B., Nicholls, Z. R. J., Rogelj, J., Canadell, J. G., Friedlingstein, P., Frölicher, T. L., Forster, P. M., Gillett, N. P., Ilyina, T., Jackson, R. B., Jones, C. D., Koven, C., Knutti, R., MacDougall, A. H., Meinshausen, M., Mengis, N., Séférian, R., and Zickfeld, K.: Opportunities and challenges in using remaining carbon budgets to guide climate policy, *Nat. Geosci.*, 13, 769–779, <https://doi.org/10.1038/s41561-020-00663-3>, 2020.
- Matthews, H. D., Tokarska, K. B., Rogelj, J., Smith, C. J., MacDougall, A. H., Hausteine, K., Mengis, N., Sippel, S., Forster, P. M., and Knutti, R.: An integrated approach to quantifying uncertainties in the remaining carbon budget, *Commun. Earth Environ.*, 2, 7, <https://doi.org/10.1038/s43247-020-00064-9>, 2021.
- McLaren, D.: Mitigation deterrence and the “moral hazard” of solar radiation management, *Earth’s Future*, 4, 596–602, <https://doi.org/10.1002/2016EF000445>, 2016.
- Meinshausen, M., Meinshausen, N., Hare, W., Raper, S. C. B., Frieler, K., Knutti, R., Frame, D. J., and Allen, M. R.: Greenhouse-gas emission targets for limiting global warming to 2°C, *Nature*, 458, 1158–1162, <https://doi.org/10.1038/nature08017>, 2009.
- Meinshausen, M., Raper, S. C. B., and Wigley, T. M. L.: Emulating coupled atmosphere-ocean and carbon cycle models with a simpler model, *MAGICC6 – Part 1: Model description and calibration*, *Atmos. Chem. Phys.*, 11, 1417–1456, <https://doi.org/10.5194/acp-11-1417-2011>, 2011a.
- Meinshausen, M., Smith, S. J., Calvin, K., Daniel, J. S., Kainuma, M. L. T., Lamarque, J., Matsumoto, K., Montzka, S. A., Raper, S. C. B., Riahi, K., Thomson, A., Velders, G. J. M., and van Vuuren, D. P. P.: The RCP greenhouse gas concentrations and their extensions from 1765 to 2300, *Climatic Change*, 109, 213–241, <https://doi.org/10.1007/s10584-011-0156-z>, 2011b.
- Meinshausen, M., Nicholls, Z. R. J., Lewis, J., Gidden, M. J., Vogel, E., Freund, M., Beyerle, U., Gessner, C., Nauels, A., Bauer, N., Canadell, J. G., Daniel, J. S., John, A., Krummel, P. B., Luderer, G., Meinshausen, N., Montzka, S. A., Rayner, P. J., Reimann, S., Smith, S. J., van den Berg, M., Velders, G. J. M., Vollmer, M. K., and Wang, R. H. J.: The shared socio-economic pathway (SSP) greenhouse gas concentrations and their extensions to 2500, *Geosci. Model Dev.*, 13, 3571–3605, <https://doi.org/10.5194/gmd-13-3571-2020>, 2020.
- Merk, C., Pönitzsch, G., and Rehdanz, K.: Knowledge about aerosol injection does not reduce individual mitigation efforts, *Environ. Res. Lett.*, 11, 054009, <https://doi.org/10.1088/1748-9326/11/5/054009>, 2016.
- Moreno-Cruz, J.: Mitigation and the geoengineering threat, *Resour. Energ. Econ.*, 41, 248–263, <https://doi.org/10.1016/j.reseneeco.2015.06.001>, 2015.
- Möller, I.: Political Perspectives on Geoengineering: Navigating Problem Definition and Institutional Fit, *Global Environ. Polit.*, 20, 57–82, https://doi.org/10.1162/glep_a_00547, 2020.
- Nauels, A., Meinshausen, M., Mengel, M., Lorbacher, K., and Wigley, T. M. L.: Synthesizing long-Term sea level rise projections-The MAGICC sea level model v2.0, *Geosci. Model Dev.*, 10, 2495–2524, <https://doi.org/10.5194/gmd-10-2495-2017>, 2017.
- Neuber, F. and Ott, K.: The buying time argument within the solar radiation management discourse, *Appl. Sci.*, 10, 4637, <https://doi.org/10.3390/app10134637>, 2020.
- Parker, A. and Irvine, P. J.: The Risk of Termination Shock From Solar Geoengineering, *Earth’s Future*, 6, 456–467, <https://doi.org/10.1002/2017EF000735>, 2018.
- Pathak, R., Slade, Shukla, P. R., Skea, J., Pichs-Madruga, R., and Ürges-Vorsatz, D.: Technical Summary, in: *Climate Change 2022: Mitigation of Climate Change, Contribution of Working Group III to the Sixth Assessment Report of the Intergovernmental Panel on Climate Change*, edited by: Shukla, P. R., Skea, J., Slade, R., Al Khourdajie, A., van Diemen, R., McCollum, D., Pathak, M., Some, S., Vyas, P., Fradera, R., Belkacemi, M., Hasija, A., Lisboa, G., Luz, S., and Malley, J., Cambridge University Press, Cambridge, UK and New York, NY, USA, 2022.
- Pierrehumbert, R.: There is no Plan B for dealing with the climate crisis, *Bull. Atom. Sci.*, 75, 215–221, <https://doi.org/10.1080/00963402.2019.1654255>, 2019.
- Raimi, K. T., Maki, A., Dana, D., and Vandenberg, M. P.: Framing of Geoengineering Affects Support for Climate Change Mitigation, *Environ. Commun.*, 13, 300–319, <https://doi.org/10.1080/17524032.2019.1575258>, 2019.
- Reynolds, J. L.: Solar geoengineering to reduce climate change: A review of governance proposals, *Proc. Roy. Soc. A*, 475, 20190255, <https://doi.org/10.1098/rspa.2019.0255>, 2019.
- Riahi, K., Schaeffer, R., Arango, J., Calvin, K., Guivarch, C., Hasegawa, T., Jiang, K., Kriegler, E., Matthews, R., Peters, G. P., Rao, A., Robertson, S., Sebbit, A. M., Steinberger, J., Tavoni, M., and van Vuuren, D. P.: Mitigation pathways compatible with

- long-term goals, in: IPCC, 2022: Climate Change 2022: Mitigation of Climate Change, Contribution of Working Group III to the Sixth Assessment Report of the Intergovernmental Panel on Climate Change, edited by: Shukla, P. R., Skea, J., Slade, R., Al Khourdajie, A., van Diemen, R., McCollum, D., Pathak, M., Some, S., Vyas, P., Fradera, R., Belkacemi, M., Hasija, A., Lisboa, G., Luz, S., and Malley, J., Cambridge University Press, Cambridge, UK and New York, NY, USA, 2022.
- Rogelj, J., Huppmann, D., Krey, V., Riahi, K., Clarke, L., Gidden, M., Nicholls, Z., and Meinshausen, M.: A new scenario logic for the Paris Agreement long-term temperature goal, *Nature*, 573, 357–363, <https://doi.org/10.1038/s41586-019-1541-4>, 2019.
- Rogelj, J., Shindell, D., Jiang, K., Fifita, S., Forster, P., Ginzburg, V., Handa, C., Kheshgi, H., Kobayashi, S., Kriegler, E., Mundaca, L., Séférian, R., and Vilarinho, M. V.: Mitigation Pathways Compatible with 1.5 °C in the Context of Sustainable Development, in: Global Warming of 1.5 °C, An IPCC Special Report on the impacts of global warming of 1.5 °C above pre-industrial levels and related global greenhouse gas emission pathway, IPCC Special Report Global Warming of 1.5 °C, 82 pp. https://www.ipcc.ch/site/assets/uploads/sites/2/2019/02/SR15_Chapter2_Low_Res.pdf (last access: 11 October 2022), 2018.
- Schleussner, C.-F., Rogelj, J., Schaeffer, M., Lissner, T., Licker, R., Fischer, E. M., Knutti, R., Levermann, A., Frieler, K., and Hare, W.: Science and policy characteristics of the Paris Agreement temperature goal, *Nat. Clim. Change*, 6, 827–835, <https://doi.org/10.1038/nclimate3096>, 2016.
- Shepherd, J., Caldeira, K., Haigh, J., Keith, D., Launder, B., Mace, G., MacKerron, G., Pyle, J., Rayner, S., Redgwell, C., and Watson, A.: Geoengineering the climate: science, governance and uncertainty, *Roy. Acad.*, RS1636, ISBN: 978-0-85403-773-5, 2009.
- Shue, H.: Climate dreaming: Negative emissions, risk transfer, and irreversibility, *J. Human Right. Environ.*, 8, 203–216, <https://doi.org/10.4337/jhre.2017.02.02>, 2017.
- Smith, P., Davis, S. J., Creutzig, F., Fuss, S., Minx, J., Gabrielle, B., Kato, E., Jackson, R. B., Cowie, A., Kriegler, E., Van Vuuren, D. P., Rogelj, J., Ciais, P., Milne, J., Canadell, J. G., McCollum, D., Peters, G., Andrew, R., Krey, V., Shrestha, G., Friedlingstein, P., Gasser, T., Grubler, A., Heidug, W. K., Jonas, M., Jones, C. D., Kraxner, F., Littleton, E., Lowe, J., Moreira, J. R., Nakicenovic, N., Obersteiner, M., Patwardhan, A., Rogner, M., Rubin, E., Sharifi, A., Torvanger, A., Yamagata, Y., Edmonds, J., and Yongsung, C.: Biophysical and economic limits to negative CO₂ emissions, *Nat. Clim. Change*, 6, 42–50, <https://doi.org/10.1038/nclimate2870>, 2015.
- Svoboda, T., Keller, K., Goes, M., and Tuana, N.: Sulfate aerosol geoengineering: the question of justice, *Public Aff. Q.*, 25, 157–179, 2011.
- Tilmes, S., Sanderson, B. M., and O'Neill, B. C.: Climate impacts of geoengineering in a delayed mitigation scenario, *Geophys. Res. Lett.*, 43, 8222–8229, <https://doi.org/10.1002/2016GL070122>, 2016.
- Tjiputra, J. F., Grini, A., and Lee, H.: Impact of idealized future stratospheric aerosol injection on the large-scale ocean and land carbon cycles, *J. Geophys. Res.-Biogeo.*, 121, 2–27, <https://doi.org/10.1002/2015JG003045>, 2016.
- Tokarska, K. B., Gillett, N. P., Weaver, A. J., Arora, V. K., and Eby, M.: The climate response to five trillion tonnes of carbon, *Nat. Clim. Change*, 6, 851–855, <https://doi.org/10.1038/nclimate3036>, 2016.
- UNFCCC: Conference of the Parties (COP), 30 November–11 December 2015, Paris, France, 2015.
- Vakilifard, N., Williams, R. G., Holden, P. B., Turner, K., Edwards, N. R., and Beerling, D. J.: Impact of negative and positive CO₂ emissions on global warming metrics using an ensemble of Earth system model simulations, *Biogeosciences*, 19, 4249–4265, <https://doi.org/10.5194/bg-19-4249-2022>, 2022.
- Wibeck, V., Hansson, A., and Anshelm, J.: Questioning the technological fix to climate change – Lay sense-making of geoengineering in Sweden, *Energ. Res. Soc. Sci.*, 7, 23–30, <https://doi.org/10.1016/j.erss.2015.03.001>, 2015.
- Zickfeld, K., MacDougall, A. H., and Matthews, H. D.: On the proportionality between global temperature change and cumulative CO₂ emissions during periods of net negative CO₂ emissions, *Environ. Res. Lett.*, 11, 055006, <https://doi.org/10.1088/1748-9326/11/5/055006>, 2016.