



Timing of Eocene–Miocene thrust activity in the Western Axial Zone and Chaînons Béarnais (west-central Pyrenees) revealed by multi-method thermochronology

Gemma de Vicente I Bosch, Antonio Teixell, Marc Jolivet, Pierre Labaume, Daniel Stockli, Mireia Domenech, Patrick Monie

► To cite this version:

Gemma de Vicente I Bosch, Antonio Teixell, Marc Jolivet, Pierre Labaume, Daniel Stockli, et al.. Timing of Eocene–Miocene thrust activity in the Western Axial Zone and Chaînons Béarnais (west-central Pyrenees) revealed by multi-method thermochronology. *Comptes Rendus Géoscience*, 2016, From rifting to mountain building: the Pyrenean Belt, 348 (3-4), pp.246-256. 10.1016/j.crte.2016.01.001 . insu-01301995

HAL Id: insu-01301995

<https://insu.hal.science/insu-01301995>

Submitted on 2 Mar 2021

HAL is a multi-disciplinary open access archive for the deposit and dissemination of scientific research documents, whether they are published or not. The documents may come from teaching and research institutions in France or abroad, or from public or private research centers.

L'archive ouverte pluridisciplinaire **HAL**, est destinée au dépôt et à la diffusion de documents scientifiques de niveau recherche, publiés ou non, émanant des établissements d'enseignement et de recherche français ou étrangers, des laboratoires publics ou privés.



Distributed under a Creative Commons Attribution - NoDerivatives 4.0 International License



Tectonics, Tectonophysics

Timing of Eocene–Miocene thrust activity in the Western Axial Zone and Chaînons Béarnais (west-central Pyrenees) revealed by multi-method thermochronology

Gemma V. Bosch^{a,b,*}, Antonio Teixell^c, Marc Jolivet^a, Pierre Labaume^d, Daniel Stockli^e, Mireia Domènech^c, Patrick Monié^d

^a Géosciences Rennes, Université Rennes-1, CNRS, 35042 Rennes, France

^b BRGM, 45100 Orléans, France

^c Department de Geologia, Universitat Autònoma de Barcelona, 08193 Bellaterra, Spain

^d Géosciences Montpellier, Université de Montpellier, CNRS, 34095 Montpellier, France

^e Jackson School of Geosciences, University of Texas at Austin, Austin, TX 78759, United States

ARTICLE INFO

Article history:

Received 23 November 2015

Accepted after revision 1st January 2016

Available online 30 March 2016

Handled by Yves Lagabriele

Keywords:

Thermochronology

Apatite fission tracks

Apatite and zircon (U–Th)/He

Thrusting

Pyrenees

ABSTRACT

We present new apatite (U–Th)/He (AHe), apatite fission track (AFT) and zircon (U–Th)/He (ZHe) data to unravel the timing of exhumation and thrusting in the western Axial Zone of the Pyrenees and the adjacent North Pyrenean Zone (Chaînons Béarnais). In the north, ZHe data yield cooling signals between 26 and 50 Ma in the Chaînons Béarnais, which are consistent with the onset of thrust-related cooling in the neighboring Mauléon Basin modeled by previous authors. Non-reset Triassic ages are found in the footwall of the North Pyrenean Frontal thrust (Aquitaine Basin). To the south, similar ZHe ages in both the hanging wall and footwall of the Lakora thrust record Late Eocene to Oligocene cooling that we attribute to the activity of the Gavarnie thrust. Thermal modeling of samples from the Lakora thrust hanging wall indicates cooling from Early Eocene times, recording activity of the Lakora thrust. Paleozoic detrital samples from the westernmost Axial Zone and from the Eaux-Chaudes and Balaitous–Panticosa granitic plutons yield AFT signals between 20 and 30 Ma and ZHe between 20 and 25 Ma. Modelling indicates fast cooling during this time, which we attribute to the motion of the Guarga thrust. AHe data from these Axial Zone plutons, combined with modelling, show a post-tectonic signal (8–9 Ma), which indicates renewed erosion after a period without major cooling and exhumation between 20 to 10 Ma.

© 2016 Académie des sciences. Published by Elsevier Masson SAS. This is an open access article under the CC BY-NC-ND license (<http://creativecommons.org/licenses/by-nc-nd/4.0/>).

1. Introduction

Unraveling the timing and dynamics of mountain building is a long-standing goal in collisional orogen

studies. This goal is traditionally addressed by tectonics-sedimentation analysis of synorogenic deposits and, more recently, by low-temperature thermochronology on the assumption that dated exhumation paths reflect the vertical component of the evolution of thrust belts. In the Pyrenees, the foreland basin record is well known, and thermochronology studies have focused in the past decades on the Paleozoic massifs of the Axial Zone (Fitzgerald et al., 1999; Gibson et al., 2007; Gunnell

* Corresponding author at: UMR 6118 Géosciences Rennes, B.15 - Off.127, Campus de Beaulieu, 35042 Rennes cedex, France.
E-mail address: gemmav.bosch@gmail.com (G. V. Bosch).

et al., 2009; Jolivet et al., 2007; Maurel et al., 2008; Metcalf et al., 2009; Morris et al., 1998; Sinclair et al., 2005) (Fig. 1A). More recent thermochronology studies have included the Cenozoic sedimentary rocks of the South Pyrenean foreland basin and the Paleozoic and Mesozoic rocks of the North Pyrenean Zone, to better constrain the relationships between the exhumation in the Axial Zone and the exhumation and burial in the adjacent basins (Beamud et al., 2011; Fillon and van der Beek, 2012; Fillon et al., 2013; Meresse, 2010; Mouthereau et al., 2014; Rushlow et al., 2013; Vacherat et al., 2014; Whitchurch et al., 2011).

While most of the thermochronology studies focus on the eastern and east-central Pyrenees, often around the ECORS-Pyrenees profile, the western Axial Zone and adjoining areas have been less investigated. To understand the relationships between the exhumation in the Axial Zone and the dynamics of the fold and thrust belt in the forelands, the western Axial Zone gives key information; this part of the basement interacts to the south with the

Tertiary Jaca basin, which contains the most complete foreland basin sequence recording the structural development (e.g., Barnolas and Teixell, 1994; Cámara and Klimowitz, 1985; Labaume et al., 1985; Millán et al., 2000; Teixell, 1996; Teixell and García-Sansegundo, 1995).

This work presents the first multi-method thermochronology database of the western Axial Zone of the Pyrenees (Fig. 1A), including apatite fission track (AFT), (U–Th)/He in zircon (ZHe) and apatite (AHe) data, with the aim to investigate the Pyrenean Cenozoic evolution. A few samples of the adjacent North Pyrenean Zone (Chaînons Béarnais area) are also included in the study. The area investigated is particularly interesting because it comprises the western termination of the Axial Zone Paleozoic units where it plunges under Upper Cretaceous and Paleogene rocks. It also constitutes the only area where can be observed the Cretaceous North Pyrenean basin overthrusting the Southern Pyrenees (Teixell, 1990, 1998). The thermochronology data obtained are compared with the tectonostratigraphic record of the foreland basins and

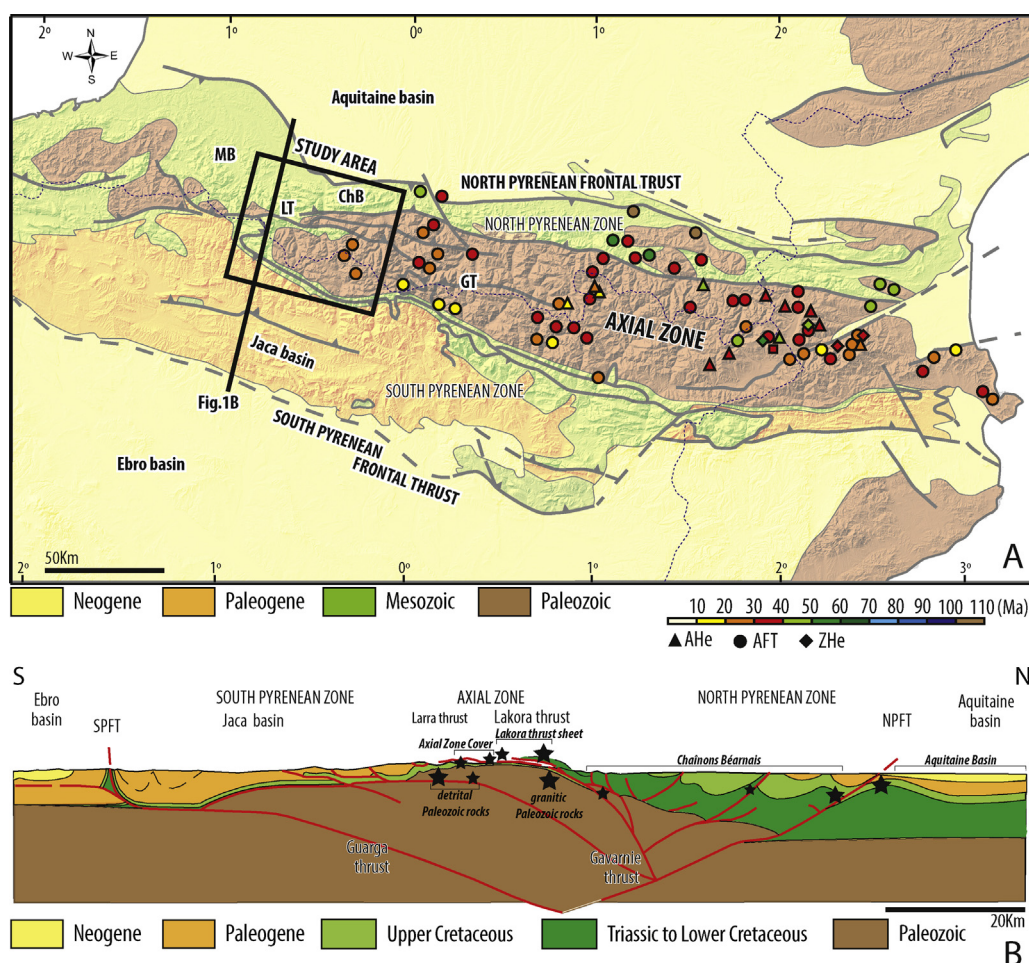


Fig. 1. A. Geological sketch of the Pyrenees with previous thermochronology results obtained in the Axial Zone (Fitzgerald et al., 1999; Gibson et al., 2007; Gunnell et al., 2009; Jolivet et al., 2007; Maurel et al., 2008; Metcalf et al., 2009; Morris et al., 1998; Sinclair et al., 2005). MB: Mauleon basin; LT: Lakora Thrust; ChB: Chaînons Béarnais; GT: Gavarnie Thrust. B. Simplified cross-section across the west-central Pyrenees showing the main tectonic units discussed in this work and projected structural locations of the studied samples (large stars: several samples; small stars: single samples; Ansó-Arzaq transect of Teixell, 1998).

integrated in the tectonic framework of the west-central Pyrenees, providing a more complete picture of the history of thrust uplift and exhumation (both syntectonic and post-tectonic) of this segment of the chain.

2. Geological setting

The Pyrenees formed from Late Cretaceous to Early Miocene times due to convergence between the Iberian and European continental margins (Choukroune et al., 1990; Muñoz, 1992). As a result of the collision, the west-central Pyrenees rose as a doubly-verging orogenic prism built by basement and cover-involved thrusts. This collision belt is underlain by north-directed lower crustal subduction (Lagabrielle et al., 2010; Teixell, 1998; Teixell et al., 2016). The main upper crustal structures of this segment of the chain are shown on Fig. 1B. The North Pyrenean Zone was a rapidly-subsiding Cretaceous basin between the European and Iberian margins, floored by hyper-thinned continental crust and mantle exhumed during Albian–Cenomanian times (Jammes et al., 2009; Lagabrielle and Bodinier, 2008). This basin is now completely inverted, overthrusting to the north the Aquitaine Basin along the North Pyrenean Frontal thrust, and to the south along the Lakora thrust (Fig. 1).

The North Pyrenean Zone in the studied Chaînons Béarnais area contains thick and relatively complete Jurassic and Cretaceous successions and is internally deformed into a system of folds and thrusts detached in the Triassic Keuper facies (Lagabrielle et al., 2010). The Lakora thrust crops out as a gently-dipping fault, largely parallel to bedding in the Upper Cretaceous cover of the Axial Zone (the footwall), and carrying a thin thrust sheet of Paleozoic, Triassic and Middle–Upper Cretaceous rocks in its hanging wall (Lakora klippe and Iguntze–Mendibelza massifs, Fig. 1; Teixell, 1990, 1996). Eastward, the Lakora thrust passes laterally to various thrusts also carrying thin Paleozoic basement slices located at the southern edge of the Chaînons Béarnais (e.g., Eaux-Chaudes and Cinq-Monts thrusts; Ternet et al., 2004). The Lakora thrust and these eastern extensions derive from the inversion of extensional structures in the upper Iberian continental margin (Teixell et al., 2016).

The southern part of the west-central Pyrenees is characterized by south-verging thrusts and includes (1) the Axial Zone, a basement antiformal culmination caused by the Gavarnie thrust, and (2) the Paleogene Jaca basin, a large-scale asymmetric synform between the Axial Zone and the South Pyrenean Frontal thrust (Fig. 1).

Paleozoic rocks of the Axial Zone are unconformably covered by Upper Cretaceous shelf carbonates. A branch of the Lakora thrust, the Larra thrust, propagated across Upper Cretaceous–Eocene rocks of the Axial Zone cover and the northern Jaca basin. East of the study area, the Axial Zone comprises stacked basement thrust sheets that caused a greater structural relief and a large basement exposure (e.g., Muñoz, 1992; Roure et al., 1989). There, the northern boundary of the Axial Zone is marked by the North Pyrenean Fault, a steeply-dipping structure with complex kinematics that passes westward to a south-verging *décollement* at the southern edge of the Chaînons

Béarnais. The westward plunge of the Axial Zone in the study area provides constraint on the structural relief and shape of the top of the Axial Zone and on the relationships between the main structural units. Non-exposed basement thrusts underlie the Jaca basin and cause major variations of structural relief (e.g., the Guarga thrust, Fig. 1B; Cámara and Klimowitz, 1985; Labaume et al., 1985; Teixell, 1996; Teixell and García-Sansegundo, 1995).

Pre-orogenic Mesozoic successions in the Jaca basin are relatively thin and incomplete; in contrast, the Paleogene infill is very thick (up to 9 km) and conforms to a typical flysch-to-molasse foreland basin sequence (Mutti et al., 1988; Puigdefàbregas, 1975). Tectonics–sedimentation relationships indicate a piggy-back sequence of thrusting from the Lakora to the Guarga thrusts that spans the entire Pyrenean orogeny. The Lakora thrust probably initiated in the Late Santonian, as indicated by flexure in its footwall sediments, and its main activity continued until the Middle Eocene (Bartonian). This includes the footwall splays of the Larra thrust and the laterally equivalent Eaux-Chaudes thrust (Teixell, 1996). The Gavarnie thrust was active from the Late Eocene to the Early Oligocene, whereas the Guarga thrust took up final compressive deformation from the Late Oligocene to the Earliest Miocene (Teixell, 1996).

The chronology of the North Pyrenean thrusts is less known. The internal structures of the Chaînons Béarnais were initiated during the Late Jurassic–Early Cretaceous as diapiric salt walls in extensional context (Canérot, 1985; Teixell et al., 2016), but their evolution in the Pyrenean orogeny is less constrained in time. The North Pyrenean Frontal thrust appears as a long-lived structure partly contemporaneous to the Lakora thrust and extending until more recent times. Indeed, in the study area, growth strata in its footwall syncline indicate thrusting beginning in Campanian–Maastrichtian times and continuing during the Paleogene (Poitevin et al., 2014), and thermochronologically-constrained cooling in the Mauléon segment of the North Pyrenean Zone, to the west of the study area, begun some 50 Ma ago (Vacherat et al., 2014). In spite of this early thrusting activity, the molasse deposition in the Aquitaine basin derived from the Pyrenean reliefs spans from the Late–Middle Eocene to the Miocene (Biteau et al., 2006).

The extent to which the described sequence of thrusts is reflected in the exhumation history is not known yet. Northeast of the Jaca basin, AFT in the granites of the Axial Zone, yield Cenozoic cooling ages (e.g., Néouvielle and Bielsa massifs; Jolivet et al., 2007), but the degree of post-Variscan reset and the amount of exhumation of the westernmost Axial Zone and the Lakora thrust are unknown. In spite of the rich tectonostratigraphic record of the Jaca basin, discrepancies remain for the timing of some major structures. Muñoz et al. (2013) recently attributed the emplacement of the Gavarnie thrust sheet to the Middle Eocene, on the basis of a correlation between the basement thrust and the growing and rotating cover structures in the Aínsa basin. The previous attribution of the Gavarnie thrust to more recent times was based on the refolding it produced in the overlying Larra–Monte Perdido thrust, which was linked to the Boltaña anticline, in turn dated as Late Lutetian to Bartonian (Teixell, 1996).

A Late Eocene to Oligocene age for the Gavarnie thrust has also been favored by Jolivet et al. (2007) on the basis of AFT ages of ca. 35 Ma of the thrust hanging wall at high elevation in the Nèouvielle granite. On the other hand, AFT ages around 20 Ma dominate the southernmost Axial Zone in the central Pyrenees, in the footwall of the Gavarnie thrust (Fitzgerald et al., 1999; Jolivet et al., 2007; Sinclair et al., 2005). In post-tectonic times, an acceleration of exhumation rates at 9 Ma was detected by AHe modeling in the eastern part of the South Pyrenean foreland basin (Fillon and van der Beek, 2012). To date, this event has not been reported in the Axial Zone except for a 10.9 ± 1.0 Ma sample obtained by Jolivet et al. (2007) in the Bielsa massif.

3. Sampling and methods

A total of 18 samples were collected for ZHe, AFT and AHe studies and five more samples from Meresse (2010) were used to complete the dataset (see location on Fig. 2). Five samples were taken in the Paleozoic granites of the Balaitous–Panticosa and Eaux-Chaudes plutons, and three in Paleozoic detrital rocks to the west to unravel the timing of exhumation of the western Axial Zone. These were complemented with the five previous AFT results from Meresse (2010) and new He data made on these samples. To gain insight into the activity of the Lakora thrust, two samples were taken in Upper Cretaceous and Lower Eocene turbiditic sediments from the footwall (Axial Zone cover) and three in Albian conglomerates from the hanging wall. To complete the study to the north, four samples were

taken in the Chaînons Béarnais (NPZ) and two in the Aquitaine basin, in the footwall of the North Pyrenean Frontal Thrust.

The nine samples that contained a sufficient number of high-quality apatites were analyzed for fission tracks and/or (U–Th)/He (Tables 1 and 2 in Annex 1, online supplementary data). Zircon grains could be retrieved from most samples, and ZHe analyses were performed on 18 samples (Table 3 in Annex 1, online supplementary data). Sample JA2 did not provide zircon suitable for analysis. The data obtained allowed thermal modeling of four profiles in the granitic massifs of Balaitous–Panticosa and Eaux-Chaudes and in the Lakora thrust sheet.

The AFT analyses were performed following the procedure described by Jolivet et al. (2007). The mounted samples were sent to Oregon State University for irradiation. Ages were calculated using an overall zeta value of 344 ± 2 a·cm² (GVB) obtained on both Durango (McDowell et al., 2005) and Mount Dromedary (Green, 1985; Tagami, 1987) apatite standards.

Apatite (U–Th)/He dating measurements were performed at Geosciences Montpellier, following the procedure described in Romagny et al. (2014). Prismatic apatites were selected, with two or no pyramids and sizes ranging from 50 to 200 µm. For the samples from the Balaitous–Panticosa pluton, two to three apatite grains of the same size were used for each aliquot with the exception of sample GPY15 for which single crystals were dated. In the Eaux-Chaudes pluton, only two aliquots from sample GPY09 contained two grains.

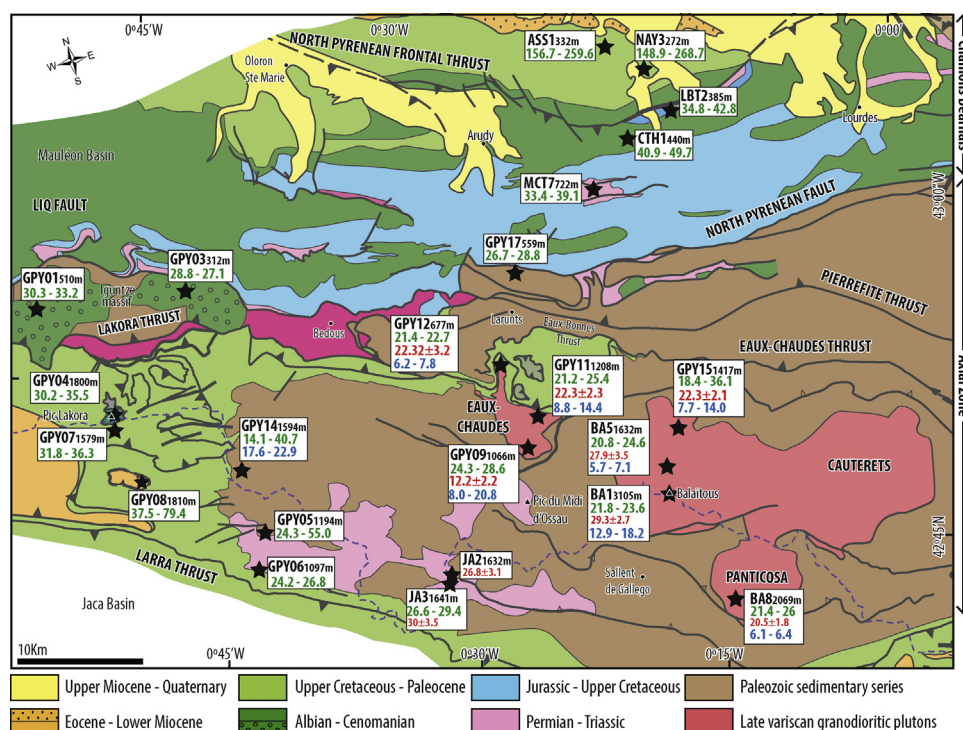


Fig. 2. Map of the western Pyrenean Axial Zone and adjacent Chaînons Béarnais, showing location of samples and thermochronological results; zircon (U–Th)/He (ZHe) results in green, apatite fission track (AFT) in red and apatite (U–Th)/He (AHe) in blue. For He data, we indicate the age ranges (for further information, see Tables 1, 2 and 3 in Annex 1, online supplementary data). The blue dashed line indicates the drainage divide.

Zircon (U–Th)/He dating was carried out at the University of Texas–Austin using laboratory procedures described in Wolfe and Stockli (2010). Individual ages were calculated using standard α -ejection corrections (e.g., Farley et al., 1996; Farley, 2002) and reported age uncertainties of about 8% (2σ) are based on the reproducibility of replicate analysis of laboratory standards (Farley et al., 2001; Reiners et al., 2004). Both uncorrected and α -ejection corrected ages are reported (Table 3 in Annex 1, online supplementary data).

4. Results

In what follows, data are organized according to the structural position of the samples in the different tectonic or lithologic units (Fig. 2). For ZHe ages, we present age–elevation plots and ages versus Ue plots in Annex 1 (online supplementary data).

4.1. The Chaînons Béarnais and the Aquitaine Basin

The sample set of the Chaînons Béarnais and the Aquitaine Basin consists of terrigenous rocks of Carboniferous to Cretaceous age that provided only zircon crystals suitable for analysis. In the Aquitaine Basin, samples ASS1 and NAY2 are poorly cemented sandstones of Campanian and Maastrichtian, respectively, and yield a dispersion of ZHe ages older than the depositional age, ranging between ~ 150 and ~ 270 Ma (for error margins see Table 3 in Annex 1, online supplementary data), indicating no reset after deposition. In the Chaînons Béarnais, ZHe ages range between 26 and 50 Ma, which is younger than the depositional ages, and attest for exhumation in the hanging wall of the North Pyrenean Frontal thrust. Sample CTH1 yields the oldest age range (41–50 Ma) in accordance with its highest structural position in an Albian–Cenomanian syncline. The southernmost sample GPY17 from the Carboniferous sandstone of the Chaînons Béarnais basement yields the younger age range, between 26 and 29 Ma, in spite of a higher elevation. Samples from the Permian–Triassic red beds (LBT2 and MCT7) yield intermediate ages between 33 and 42 Ma.

4.2. The Lakora thrust sheet

Three samples from the Albian Mendibelza conglomerate (Boirie and Souquet, 1982) provided zircons suitable for analysis, but no apatites. The three samples provide ZHe ages in the Late Eocene–Early Oligocene interval, ranging from 27 and 29 Ma at the lower altitude (312 m, GPY03) to 30 and 35 Ma at higher altitude (1800 m in the Lakora klippe, GPY04).

4.3. The Axial Zone cover

In the post-Variscan cover of the Axial Zone (hanging wall of the Gavarnie thrust), a Maastrichtian turbiditic sandstone (GPY07, 1579 m) provides ZHe ages of 31–36 Ma, younger than the depositional age and strikingly similar to the age in the Lakora thrust sheet just above (Fig. 2). A sample of Lower Eocene flysch located ~ 5 km to

the south (GPY08, 1810 m) yields a wide dispersion of ZHe ages (37–80 Ma), some of them older than the depositional age, indicative of partial reset.

4.4. The western Axial Zone: detrital Paleozoic rocks

Samples from the westernmost Paleozoic exposures of the Axial Zone also belong to the hanging wall of the Gavarnie thrust and comprise Carboniferous and Permian sandstones that provided apatite and zircon crystals with large age dispersion. Samples JA2 and JA3 of the southern Axial Zone near the Somport pass yield comparable AFT (Meresse, 2010) and ZHe central ages that may indicate rapid cooling at 25–30 Ma, as do some zircon crystals from samples GPY05 and GPY06 from the Upper Aragón Subordán valley. The latter samples show however a greater dispersion, as does Carboniferous sandstone from the Lescun area further north (GPY14), whose age dispersion ranges between 14 and 52 Ma (Fig. 2 and Table 3 in Annex 1, online supplementary data).

4.5. The western Axial Zone: the Eaux-Chaudes and Balaitous–Panticosa plutons

These granitic bodies provided apatite and zircon crystals that were suitable for AFT, AHe and ZHe analyses. Most of the samples show ZHe ages independent of the eU concentration, suggesting complete reset (see Annex 1). In the Eaux-Chaudes pluton, samples GPY11 and GPY12 yield similar ZHe and AFT ages that may be indicative of rapid cooling between 20 and 25 Ma, further attested to by the similarity in age between the samples in spite of a difference in elevation of 531 m. Sample GPY09 at an intermediate altitude yields a ZHe age of 24–28 Ma, while the AFT age is significantly younger, around 12 Ma (Figs. 2 and 3, Tables 1 and 3 in Annex 1, online supplementary data). In the Balaitous–Panticosa granites, ZHe ages are also markedly clustered at 20–25 Ma for different elevations. However, samples BA1 and BA5 from the Balaitous mountain give AFT ages of 28–29 Ma (Meresse, 2010), slightly older than the ZHe ages obtained for the same samples in this study (Table 3 in Annex 1, online supplementary data). Sample GPY15 at lower elevation yields an AFT age of 18 Ma, whereas ZHe ages are more dispersed (18–36 Ma). The AHe ages obtained for this set of samples range between 21 and 6 Ma, with a cluster between 6 and 10 Ma, again younger than the AFT ages (Fig. 3 and Table 2 in Annex 1, online supplementary data), but with similar age if we take into account the 2σ errors of both AFT and AHe data.

5. Thermal modeling

Thermal history modeling was performed using QTQt software (Gallagher, 2012; Gallagher et al., 2009). For AFT modeling of the only sample with confined track lengths (GPY11), we used Ketchum et al.'s (2007) multikinetic annealing model, with the D_{par} parameter as kinetic constraint. (U–Th)/He ages were modeled using a spherical diffusion domain (based on the crystal's equivalent

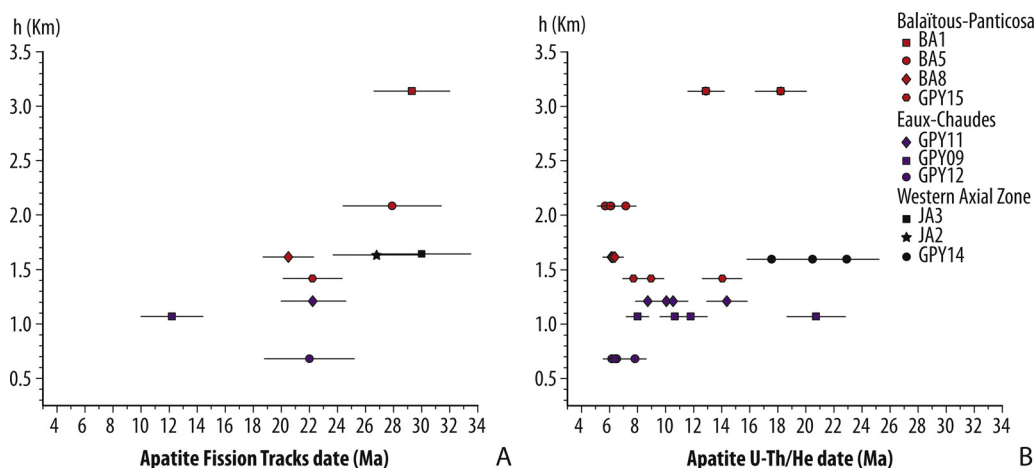


Fig. 3. Apatite fission track (AFT) age-elevation plot of the Eaux-Chaudes and Balaitous–Panticosa granodiorites dataset (in red), and of the GPY14 sample from Paleozoic sediments in the westernmost Axial Zone (black).

spherical radius), and taking into account eU-dependent radiation damage modulated diffusivity for He diffusion, following the models of Flowers et al. (2009) and Guenther et al. (2013). In cases where AHe ages were obtained by multigrain aliquots, we did not use a specific diffusion model. Models were run for the sub-vertical profiles at the Balaitous–Panticosa and Eaux-Chaudes granites and at the Lakora thrust sheet. All models were forced to be at surface temperature at present time and we allowed the temperature offset between samples to vary through time in a range equivalent to geothermal gradients of 15 to 35 °C/km.

For the Balaitous–Panticosa and Eaux-Chaudes granites, independent constraints derived from field geology (unconformity of the Cenomanian carbonates above Paleozoic rocks of the Axial Zone) were used as input parameters in the thermal models to force the cooling curves to pass near the surface in Cenomanian times. The profile in the hanging wall of the Lakora thrust was constrained to pass near the surface in Albian times (stratigraphic age of the Mendibelza conglomerate), whereas a model of the westernmost Axial Zone (Paleozoic rocks and their cover) was constrained to be at shallow levels from the Cenomanian to the Early Eocene.

Models of the Eaux-Chaudes and Balaitous–Panticosa sub-vertical profiles show similar results, with a fast exhumation from ~30 Ma to ~20 Ma (Fig. 4). Prior to that age interval, the thermal history is not well constrained by the data, as reflected by the high degree of uncertainty in the thermal path, taking into account the 95% credible intervals (Fig. 4A–B). After 20 Ma, the Eaux-Chaudes profile shows a slower cooling towards the surface. In contrast, the Balaitous–Panticosa profile shows a period of stability, although not well constrained by the data, with a last rapid cooling event at 8–9 Ma. The mean geothermal gradient inferred from the temperature offset between samples is of 25 °C/km, with no major variation over time (Fig. 4C–D). ZHe and AHe ages predicted from modeling are coherent within error margins with the observed ages. AFT show worse predicted ages; therefore, the predicted ages are

within the error margins of the observed AFT ages only in the case of GPY09 and GPY15 (Fig. 4E–F).

Modeling results of the Lakora thrust sheet show that the samples crossed the lower limit of the zircon partial-retention zone (ZPRZ) at 50–42 Ma (bottom and top samples), with a moderate rate of cooling, and passed through the upper limit of the ZPRZ at 25–30 Ma (Fig. 5). The pre-Eocene thermal history is not well constrained, due to large uncertainties in the models, reflected by the 95% credible intervals (Fig. 5A). Therefore, the onset age of exhumation cannot be determined from the models, although modeling suggests they were already exhuming by 50–42 Ma. Above the ZPRZ, the thermal path is not constrained, as no AFT and AHe ages were obtained in those samples. As shown on Fig. 5E, the model-predicted ages are consistent, within error margins, with the observed ages.

The modeled thermal path of the Lakora thrust's footwall indicates a fast cooling at ~25 Ma, followed by a slower rate final cooling from 25 Ma to the Present. However, this final cooling pattern is not well constrained, since AHe ages were only obtained from one sample (Fig. 5B). Data modeling shows a constant geothermal gradient of 25 °C/km, inferred from the offset between samples. In this case, ZHe ages are badly predicted, as shown on Fig. 5F. Samples from this vertical profile show large intra-sample age dispersion that cannot be predicted by the QTQt software, indicating that the dispersion cannot be explained by crystals eU content or size. The age dispersion could be produced, for example, by complex internal zonation in zircon grains, which are not incorporated in the modeling due to lack of information. The poor predictions showed by the model imply that this last cooling history should be considered with caution.

6. Interpretation and discussion

Single-grain dating performed in this study provide the following five main results:

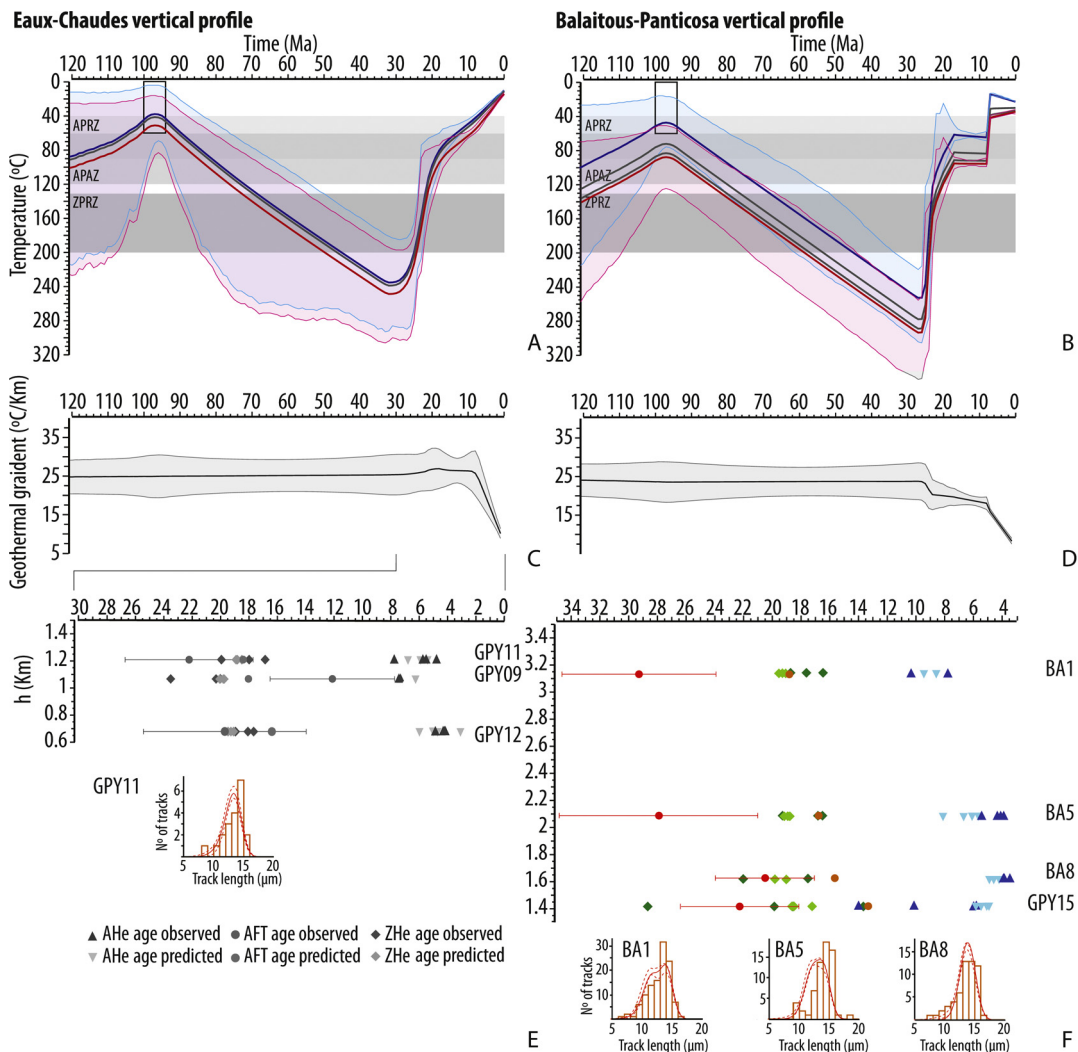


Fig. 4. A, B. Modeled thermal history of the Eaux-Chaudes and Balaitous–Panticosa sub-vertical profiles. The red line corresponds to the path of the hottest (lowest elevation) sample (with 95% credible interval range in magenta) and the blue line corresponds to the coolest (highest elevation) sample (with 95% credible interval range in cyan). Intermediate samples are shown in grey. Black boxes correspond to the constraints imposed on the modeling (see text for further information). C, D. Modeled geothermal gradients in red with 95% credible interval range in grey. E, F. Observed and model-predicted apatite (U–Th)/He (AHe) and zircon (U–Th)/He (ZHe) uncorrected ages versus elevation. The predicted track length distribution on sample GPY11 is plotted in red with 95% credible intervals in orange in comparison with observed track length data (histograms).

- in the Aquitaine Basin, ZHe data indicate no post-depositional reset of ages;
- the Chaînons Béarnais of the North Pyrenean Zone record a protracted exhumation between 50 and 26 Ma (Eocene to Oligocene);
- the Lakora thrust sheet was exhumed through the ZHe closure temperature together with its footwall (upper levels of the Gavarnie thrust sheet) at 30–36 Ma (Late Eocene to Oligocene);
- the granitic massifs of Eaux-Chaudes and Balaitous–Panticosa, and the Upper Paleozoic rocks of the Somport area, all located in the Gavarnie thrust sheet, record a rapid exhumation at 26–20 Ma (Late Oligocene to Aquitanian);
- the granitic massifs record a final acceleration of exhumation at 8–9 Ma (Late Miocene), which is constrained by the AHe data.

Thermal models further constrain the cooling history of the Lakora thrust sheet, indicating that it was exhuming at least between 50–42 Ma and 30–25 Ma (Early Eocene to Oligocene), and better define the rapid exhumation history of the Eaux-Chaudes and Balaitous–Panticosa granites.

In what follows, we interpret the obtained cooling ages and paths as indicating exhumation primarily linked to the activity of tectonic units, although we understand that climatic events may have played a role to an unknown degree. The samples from the Uppermost Cretaceous rocks of the Aquitaine Basin preserve ZHe detrital ages older than the stratigraphic age, indicating that burial under Cenozoic foreland basin deposits was not enough to reset the ZHe system. This is consistent with the limited degree of diagenesis and cementation observed in these rocks. This pattern changes across the NPFT, where rocks from

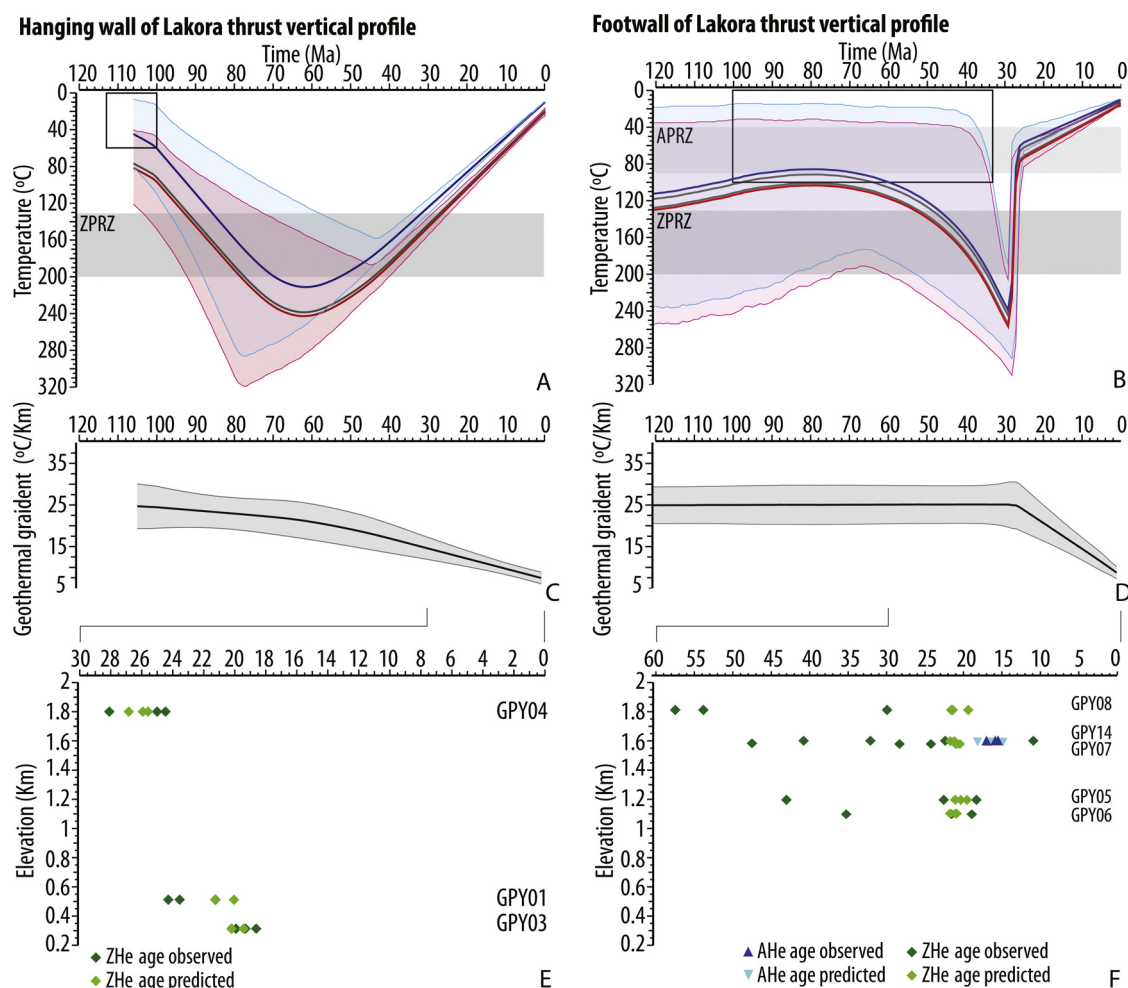


Fig. 5. A, B. Modeled thermal history of the vertical profile located in the footwall and hanging wall of the Lakora thrust. The red line corresponds to the path of the hottest (lowest elevation) sample (with 95% credible interval range in magenta). The blue line corresponds to the coolest (highest elevation) sample (with 95% credible interval range in cyan). Intermediate samples are shown in grey. Black boxes correspond to the constraints imposed into the modeling (see the text for further information). C, D. Modeled geothermal gradients in black with 95% credible interval range in grey. E, F. Observed and modeled predicted apatite (U–Th)/He (AHe) and zircon (U–Th)/He (ZHe) uncorrected ages versus elevation.

Paleozoic to Albian age have been buried and heated enough to reset the ZHe system. In the Chaînons Béarnais area, the effect of burial was reinforced by high heat flow during the Middle and Late Cretaceous times, detected by Raman spectroscopy of carbonaceous material that provided paleo-temperatures of 250–300 °C (Clerc et al., 2015). The range of ZHe cooling ages obtained attest for long-lived exhumation in the North Pyrenean Zone initiating at ~50 Ma (including the Lakora thrust hanging wall), consistent with thermal modeling by Vacherat et al. (2014) in the Mauléon basin. To the east of the study area, AFT ages by Meresse (2010) from the Bagnères-de-Bigorre North Pyrenean massif were centered at ca. 41 Ma. Farther east, along the ECORS-Pyrénées transect, most of the AFT data from the North Pyrenean basement rocks indicate exhumation during the Eocene (Fitzgerald et al., 1999; Morris et al., 1998). These data together support an early exhumation of the North Pyrenean Zone during the Early to Middle Eocene. In the study area, we associate the

exhumation of the Chaînons Béarnais with the pop-up extrusion of the former North Pyrenean basin by the NPFT to the north and the Lakora thrust and its eastern extensions such as the Eaux-Chaudes thrust (Teixell et al., 2016). Younger cooling ages obtained in the area, especially at deep stratigraphic levels, indicate that thrust-related exhumation proceeded during younger times, caused by continued uplift on the NPFT and probably also by the thick-skinned basement thrusts of the southern Pyrenees, such as the Gavarnie and Guarga thrusts (Fig. 1B). ZHe ages centered on 34–40 Ma in Permian–Triassic rocks indicate exhumation during Middle and Late Eocene to Oligocene, which is consistent with the onset of molasse sedimentation of this age in the Aquitaine basin (Biteau et al., 2006). On the other hand, the southward extent of the Lakora thrust sheet is constrained by the non-completely reset Eocene sample from Pico Matz (GPY08), in agreement with the hanging wall ramp of the Lakora thrust observed in the Lakora klippe, 6 km to the north of Pico Matz.

ZHe ages indicate that the Lakora thrust sheet and its immediate footwall of the Axial Zone cover underwent joint exhumation at 30–36 Ma (Late Eocene to Oligocene), which we must attribute to thrust faulting under the Axial Zone. This cooling age is correlative with Late Eocene to Early Oligocene conglomerate pulses in the Jaca basin, which are dominated by clasts derived from Lower to Middle Eocene turbidites (Puigdefàbregas, 1975; Roigé et al., 2016). We attribute this event to the motion along the Gavarnie thrust (Fig. 1B), because it is the first major south-directed thrust that underlies the Axial Zone in the study area, producing a significant duplication of Paleozoic rocks and creating a marked structural relief. This interpretation is in agreement with the timing of the Gavarnie thrust proposed by Teixell (1996), Jolivet et al. (2007), and Labaume et al. (in review) on the basis of structural relationships and tectonics-sedimentation relationships in the Jaca basin, and differs from Muñoz et al. (2013) attribution of the thrust to the Middle Eocene. It could be argued that the entire profile of the Gavarnie thrust sheet was emplaced below the ZPRZ, and that all the exhumation was driven by the underlying Guarga thrust (Fig. 1B), from the Late Eocene to the Miocene (e.g., samples from Balaitous, Panticosa and Eaux-Chaudes). We consider this unlikely for the study area on the basis of fault slip magnitudes and cross-section balancing in the Jaca basin (e.g., Teixell, 1996), even if the Guarga thrust causes a component of uplift on the Axial Zone. No distinct thermochronology signal can be attributed to the Larra thrust, probably because this thin-skinned branch of the Lakora thrust did not create significant structural relief during its propagation in the Jaca basin fill during the Lutetian–Bartonian.

Following these considerations, we attribute the second ZHe age cluster at 20–26 Ma observed in the western Axial Zone and the fast cooling between 30 and 20 Ma modeled in the granitic massifs to the east to continued uplift of the Axial Zone along the Guarga thrust. This activity of the Guarga thrust was correlated to the main emergence of the South Pyrenean thrust front of the External Sierras, recorded by the Late Oligocene to Aquitanian conglomerates and fluvial sandstones of the Uncastillo Formation (Millán et al., 2000; Puigdefàbregas, 1975; Teixell, 1996).

AHe data show exhumation signals between 6 and 10 Ma in the Eaux-Chaudes and Balaitous–Panticosa plutons, with samples located on both sides of the present drainage divide (Fig. 2). In the Balaitous–Panticosa profile, samples on both sides of the divide can be fit in a single coherent model, indicating that they experienced a similar cooling history. Therefore, the incision during this time could not be caused by the capture of the south-flowing Ebro River, as defended by Fillon and van der Beek (2012).

7. Conclusions

A low-temperature thermochronology study of the western Axial Zone of the Pyrenees and of the adjacent Chaînons Béarnais (North Pyrenean Zone) provides the following constraints on the tectonic and erosional history of this segment of the chain.

The uppermost Cretaceous foreland basin sediments of the Aquitaine basin have not been buried enough for post-depositional reset of the ZHe thermochronology system and preserve Permian to Jurassic detrital signals.

Within the Chaînons Béarnais, the ZHe system was reset and record continued pop-up-like exhumation of the North Pyrenean Zone between the North Pyrenean Frontal Thrust and the major south-directed thrusts of Lakora and others further south (Gavarnie and Guarga) from 50 to 26 Ma (Eocene to Oligocene).

The leading edge of the Lakora thrust sheet, which was reported to bring the North Pyrenean Zone on top of the Axial Zone during Late Cretaceous to Middle Eocene times, shows a cooling path at least from Early Eocene to Oligocene times. The Lakora thrust sheet together with its immediate footwall forming the post-Variscan cover of the Axial Zone were exhumed through the ZHe closure temperature at 36–30 Ma (Late Eocene to Oligocene) along the underlying Gavarnie thrust. Hence, the cooling path of the Lakora thrust sheet is the result of the activity of the Lakora thrust itself and of the underlying Gavarnie (and possibly Guarga) thrusts.

Paleozoic sediments of the westernmost Axial Zone often yield scattered ZHe thermochronology results indicating partial reset. The granite samples from the Eaux-Chaudes and Balaitous–Panticosa plutons provide a good ZHe and AFTL Late Paleogene to Miocene signal, clearly reflected in models as fast cooling between 30 and 20 Ma (Late Oligocene to Aquitanian). We attribute this cooling to thrusting on the Guarga thrust, ultimately uplifting the older Gavarnie thrust sheet lying above.

AHe results from the Eaux-Chaudes and Balaitous–Panticosa plutons cluster at 9–8 Ma (Late Miocene) attesting for post-orogenic cooling that was detected in previous studies of the southern foreland basin.

Acknowledgements

This work was supported by projects CGL2010-15416 and CGL2014-54180-P (MINECO, Spain) and PYRAMID (ANR, France), and by Géosciences Montpellier. We acknowledge the constructive reviews by Luis Barbero, Camille Clerc and the co-editor Yves Lagabriele, which helped to improve the manuscript. Andreu Badia is thanked for field assistance during sampling.

Appendix A. Supplementary data

Supplementary data associated with this article can be found, in the online version, at <http://dx.doi.org/10.1016/j.crte.2016.01.001>.

References

- Barñolals, A., Teixell, A., 1994. Platform sedimentation and collapse in a carbonate-dominated margin of a foreland basin (Jaca basin, Eocene, southern Pyrenees). *Geology* 22, 1107–1110.
- Beamud, E., Muñoz, J.A., Fitzgerald, P.G., Baldwin, S.L., Garcés, M., Cabrera, L., Metcalf, J.R., 2011. Magnetostratigraphy and detrital apatite fission track thermochronology in syntectonic conglomerates: constraints

- on the exhumation of the South-Central Pyrenees. *Basin Res.* 23, 309–331.
- Biteau, J.-J., Le Marrec, A., Le Vot, M., Masset, J.-M., 2006. The Aquitaine Basin. *Pet. Geosci.* 12, 247–273.
- Boirie, J.-M., Souquet, P., 1982. Les poudingues de Mendibelza : dépôts de cônes sous-marins du rift Albiens des Pyrénées. *Bull. Centres Rech. Explor.-Prod. Elf Aquitaine* 6, 405–435.
- Cámara, P., Klimowitz, J., 1985. Interpretación geodinámica de la vertiente centro-occidental surpirenaica. *Estudios Geol.* 41, 391–404.
- Canérot, J., 1985. The alpine cycle of the Iberides (Spain): example of intraplate sedimentary and tectonic evolution. *Arch. Sci.* 38, 37–62.
- Choukroune, P., Roure, F., Pinet, B., ECORS-Pyrenees Team, 1990. Main results of the ECORS-Pyrenees profile. *Tectonophysics* 173, 411–423.
- Clerc, C., Lahfid, A., Monié, P., Lagabrielle, Y., Chopin, C., Poujol, M., Boulvais, P., Ringenbach, J.-C., Masini, E., de St Blanquat, M., 2015. High-temperature metamorphism during extreme thinning of the continental crust: a reappraisal of the North Pyrenean passive paleo-margin. *Solid Earth* 6, 643–668.
- Farley, K.A., 2002. (U–Th)/He dating: techniques, calibrations, and applications. In: Porcelli, D., Ballentine, C.J., Wieler, R. (Eds.). *Noble gases in geochemistry and cosmochemistry*. *Rev. Miner.* 47, 819–844.
- Farley, K.A., Wolf, R., Silver, L., 1996. The effects of long alpha-stopping distances on (U–Th)/He ages. *Geochim. Cosmochim. Acta* 60, 4223–4229.
- Farley, K.A., Rusmore, M.E., Bogue, S.W., 2001. Post-10 Ma uplift and exhumation of the northern Coast Mountains, British Columbia. *Geology* 29, 99–102.
- Fillon, C., van der Beek, P., 2012. Post-orogenic evolution of the southern Pyrenees: constraints from inverse thermo-kinematic modelling of low-temperature thermochronology data. *Basin Res.* 24, 418–436.
- Fillon, C., Gautheron, C., van der Beek, P., 2013. Oligocene-Miocene burial and exhumation of the southern Pyrenean foreland quantified by low-temperature thermochronology. *J. Geol. Soc.* 170, 67–77.
- Fitzgerald, P.G., Muñoz, J.A., Coney, P.J., Baldwin, S.L., 1999. Asymmetric exhumation across the Pyrenean orogen: implications for the tectonic evolution of a collisional orogen. *Earth Planet. Sci. Lett.* 173, 157–170.
- Flowers, R.M., Ketcham, R.A., Shuster, D.L., Farley, K.A., 2009. Apatite (U–Th)/He thermochronometry using a radiation damage accumulation and annealing model. *Geochim. Cosmochim. Acta* 73, 2347–2365.
- Gallagher, K., 2012. Transdimensional inverse thermal history modelling for quantitative thermochronology. *J. Geophys. Res.* 117, B02408, <http://dx.doi.org/10.1029/2011JB00882>.
- Gallagher, K., Charvin, K., Nielsen, S., Sambridge, M., Stephenson, J., 2009. Markov chain Monte Carlo (MCMC) sampling methods to determine optimal models, model resolution and model choice for Earth Science problems. *Mar. Petrol. Geol.* 26, 525–535.
- Gibson, M., Sinclair, H.D., Lynn, G.J., Stuart, F.M., 2007. Late- to post-orogenic exhumation of the Central Pyrenees revealed through combined thermochronological data and modeling. *Basin Res.* 19, 323–334.
- Green, P.F., 1985. A comparison of zeta calibration baselines in zircon, sphene and apatite. *Chem. Geol.* 58, 1–22.
- Guenther, W.R., Reiners, P.W., Ketcham, R.A., Nasdala, L., Giester, G., 2013. Helium diffusion in natural zircon: radiation damage, anisotropy, and the interpretation of zircon (U–Th)/He thermochronology. *Am. J. Sci.* 313, 145–198.
- Gunnell, Y., Calvet, M., Brichau, S., Carter, A., Aguilar, J.-P., Zeyen, H., 2009. Low long-term erosion rates in high-energy mountain belts: insights from thermo- and biochronology in the Eastern Pyrenees. *Earth Planet. Sci. Lett.* 278, 208–218.
- Jammes, S., Manatschal, G., Lavier, L., Masini, E., 2009. Tectono-sedimentary evolution related to extreme crustal thinning ahead of a propagating ocean: the example of the western Pyrenees. *Tectonics* 28, TC4012, <http://dx.doi.org/10.1029/2008TC002406>.
- Jolivet, M., Labaume, P., Monié, P., Brunel, M., Arnaud, N., Campani, M., 2007. Thermochronology constraints for the propagation sequence of the South Pyrenean basement thrust system (France–Spain). *Tectonics* 26, 1–17, <http://dx.doi.org/10.1029/2006TC002080>.
- Ketcham, R.A., Carter, A., Donelick, R.A., Barbarand, J., Hurford, A.J., 2007. Improved modelling of fission track annealing in apatite. *Am. Mineral.* 92, 789–798.
- Labaume, P., Séguret, M., Seyve, C., 1985. Evolution of a turbiditic foreland basin and analogy with an accretionary prism: example of the Eocene South Pyrenean basin. *Tectonics* 4, 661–685.
- Labaume, P., Meresse, P., Jolivet, M., Teixell, A., Lahfid, A., in review. Tectono-thermal history of an exhumed thrust-sheet-top basin: an example from the South Pyrenean thrust belt. *Tectonics*. (in review).
- Lagabrielle, Y., Bodinier, J.L., 2008. Submarine reworking of exhumed subcontinental mantle rocks: field evidence from the Lherz peridotites, French Pyrenees. *Terra Nova* 20, 11–21.
- Lagabrielle, Y., Labaume, P., de Saint Blanquat, M., 2010. Mantle exhumation, crustal denudation, and gravity tectonics during Cretaceous rifting in the Pyrenean realm (SW Europe): insights from the geological setting of the Iherzolite bodies. *Tectonics* 29, 1–26.
- Maurel, O., Monié, P., Pik, R., Arnaud, N., Brunel, M., Jolivet, M., 2008. The Meso-Cenozoic thermo-tectonic evolution of the Eastern Pyrenees: an $^{40}\text{Ar}/^{39}\text{Ar}$ fission track and (U–Th)/He thermochronological study of the Canigou and Mont-Louis massifs. *Int. J. Earth Sci.* 97, 565–584.
- McDowell, F.W., McIntosh, W.C., Farley, K.A., 2005. A precise ^{40}Ar – ^{39}Ar reference age for the Durango apatite (U–Th)/He and fission track dating standard. *Chem. Geol.* 214, 249–263.
- Meresse, F., 2010. Dynamique d'un prisme orogénique intracontinental : évolution thermochronologique (traces de fission sur apatite) et tectonique de la Zone Axiale et des piedmonts des Pyrénées centro-occidentales (Thèse). Université Montpellier II, Montpellier, France (277 p.).
- Metcalf, J.R., Fitzgerald, P.G., Baldwin, S.L., Muñoz, J.-A., 2009. Thermochronology of a convergent orogen: constraints on the timing of thrust faulting and subsequent exhumation of the Maladeta Pluton in the Central Pyrenean Axial Zone. *Earth Planet. Sci. Lett.* 287, 488–503.
- Millán, H., Pueyo, E.L., Aurell, M., Aguado, A., Oliva, B., Martínez Peña, M.B., Pocoví, A., 2000. Actividad tectónica registrada en los depósitos terciarios del frente meridional del Pirineo central. *Rev. Soc. Geol. España* 13, 279–300.
- Morris, R.G., Sinclair, H.D., Yelland, A.J., 1998. Exhumation of the Pyrenean orogen: implications for sediment discharge. *Basin Res.* 10, 69–85.
- Mouthereau, F., Filleaudeau, P.-Y., Vacherat, A., Pik, R., Lacombe, O., Fellin, M.G., Castellort, S., Christophoul, F., Masini, E., 2014. Placing limits to shortening evolution in the Pyrenees: role of margin architecture and implications for the Iberia/Europe convergence. *Tectonics* 33, 1–32, <http://dx.doi.org/10.1002/2014TC003663>.
- Muñoz, J.A., 1992. Evolution of a continental collision belt: ECORS-Pyrenees crustal balanced cross-section. In: McClay, K.R. (Ed.), *Thrust Tectonics*. Chapman and Hall, London, UK, pp. 235–246.
- Muñoz, J.A., Beamud, E., Fernández, O., Arbués, P., Dinarès-Turell, J., Poblet, J., 2013. The Aínsa fold and thrust oblique zone of the central Pyrenees: kinematics of a curved contractional system from paleomagnetic and structural data. *Tectonics* 32, 1142–1175.
- Mutti, E., Séguret, M., Sgavetti, M., 1988. Sedimentation and deformation in the Tertiary sequences of the southern Pyrenees. *Field Trip Guidebook 7*. In: AAPG Mediterranean Basins Conference, Nice (169 p.).
- Poitevin, C., Labaume, P., Gay, A., Teixell, A., 2014. Du rifting à l'inversion pyrénéenne dans le Bassin d'Aquitaine : interprétation du profil sismique St-Pé de Bigorre-Condom. In: *Rés. 24^e Réunion des Sciences de la Terre*, Pau, p. 327.
- Puigdefàbregas, C., 1975. La sedimentación molásica en la cuenca de Jaca. *Pirineos* 104, 1–188.
- Reiners, P.W., Spell, T.L., Nicolescu, S., Zanetti, K.A., 2004. Zircon (U–Th)/He thermochronometry: He diffusion and comparisons with $^{40}\text{Ar}/^{39}\text{Ar}$ dating. *Geochim. Cosmochim. Acta* 68, 1857–1887.
- Roigé, M., Gómez-Gras, D., Remacha, E., Daza, R., Boya, S., 2016. Tectonic control on sediment sources in the Jaca basin (Middle and Upper Eocene of the Southern Pyrenees). *C. R. Geoscience* 348, <http://dx.doi.org/10.1016/j.crte.2015.10.005> (this issue).
- Romagny, A., Münch, P., Cornée, J.J., Corsini, M., Azdimousa, A., Melinte-Dobrinescu, M.C., Drinia, H., Bonno, M., Arnaud, N., Monié, P., Quillevéré, F., Ben Moussa, A., 2014. Late Miocene to present-day exhumation and uplift of the Internal Zone of the Rif chain: insights from low-temperature thermochronometry and basin analysis. *J. Geodyn.* 77, 39–55.
- Roure, F., Choukroune, P., Berástegui, X., Muñoz, J.A., Villien, P., Matheron, P., Bareyt, M., Séguret, M., Camara, P., Déramond, J., 1989. ECORS deep seismic data and data and balanced cross-sections: geometric constraints on the evolution of the Pyrenees. *Tectonics* 8, 41–50.
- Rushlow, C.R., Barnes, J.B., Ehlers, T.A., Vergés, J., 2013. Exhumation of the southern Pyrenean fold-thrust belt (Spain) from orogenic growth to decay. *Tectonics* 32, 843–860.
- Sinclair, H.D., Gibson, M., Naylor, M., Morris, R.G., 2005. Asymmetric growth of the Pyrenees revealed through measurement and modeling of orogenic fluxes. *Am. J. Sci.* 305, 369–406.
- Tagami, T., 1987. Determination of zeta calibration constant for fission track dating. *Nucl. Tracks Radiat. Meas.* 13, 127–130.
- Teixell, A., 1990. Alpine thrusts at the western termination of the Pyrenean Axial Zone. *Bull. Soc. geol. France* 8, 241–249.
- Teixell, A., 1996. The Ansó transect of the southern Pyrenees: basement and cover thrust geometries. *J. Geol. Soc. London* 153, 301–310.
- Teixell, A., 1998. Crustal structure and orogenic material budget in the West-central Pyrenees. *Tectonics* 17, 395–406.

- Teixell, A., García-Sansegundo, J., 1995. Estructura del sector central de la Cuenca de Jaca (Pirineo central). *Rev. Soc. Geol. España* 8, 207–220.
- Teixell, A., Labaume, P., Lagabrielle, Y., 2016. The crustal evolution of the west-central Pyrenees revisited: inferences from a new kinematic scenario. *C. R. Geoscience* 348 <http://dx.doi.org/10.1016/j.crte.015.10.010> (this issue).
- Ternet, Y., Majesté-Menjouls, C., Canérot, J., Baudin, T., Cocherie, A., Guerrot, C., Rossi, P., 2004. Notice explicative, carte géol. France (1/50 000), feuille Laruns-Somport (1069). Orléans: BRGM. (192 p.)
- Vacherat, A., Mouthereau, F., Pik, R., Bernet, M., Gautheron, C., Masini, E., Le Pourhiet, L., Tibaric, B., Lahfid, A., 2014. Thermal imprint of rift-related processes in orogens as recorded in the Pyrenees. *Earth Planet. Sci. Lett.* 408, 296–306.
- Whitchurch, A.L., Carter, A., Sinclair, H.D., Duller, R.A., Whittaker, A.C., Allen, P.A., 2011. Sediment routing system evolution within a diachronously uplifting orogen: insights from detrital zircon thermochronological analyses from the South-Central Pyrenees. *Am. J. Sci.* 311, 442–482.
- Wolfe, M.R., Stockli, D.F., 2010. Zircon (U–Th)/He thermochronometry in the KTB drill hole, Germany, and its implications for bulk He diffusion kinetics in zircon. *Earth Planet. Sci. Lett.* 295, 69–82.